

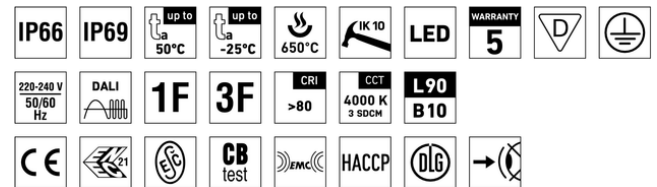


Hazardous
Lighting Solutions LTD



INNOVA ABS

Dustproof, waterproof, and chemically resistant.



MECHANICAL FEATURES

- Housing:** Dark grey ABS
- Diffuser:** Translucent ABS
- Ingress protection:** IP66/IP69
- Impact strength:** IK10
- Mounting:** Suitable for suspended, ceiling, wall, and surface mounting via stainless hooks and brackets

ELECTRICAL FEATURES

- Electric equipment:** LED modules, fixed output driver or DALI driver
- Wiring:** Optional through wiring (up to 5 wires inside light fitting)
- Certification:** CE, ESČ, ENEC, CB, HACCP, DLG

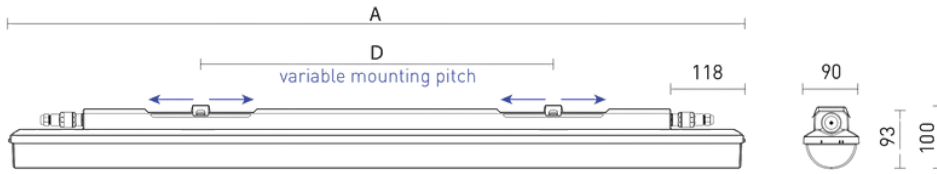
WORK PARAMETERS

- Ambient Temperatures:** -25°C to + 50°C
- Lifetime:** 50.000h L90 B10

PHOTOMETRICAL PARAMETERS

- CRI:** >80 standard
- Colour temperature:** 4000K - standard
- CRI >80:** 3000K, 5000K, 6500K - on request
- CRI >90:** 3000K, 4000K, 5000, 6500K - on request

TYPES COMPARISON



Type	Max. ambient temperature [°C]	Luminous flux of LED modules [lm]	Luminous flux of light fitting [lm]	Power consumption [W]	System efficacy [lm/W]	UGR Longitudinal / transverse	Net weight [kg]	A [mm]	D [mm]
INNOVA 1.4ft ABS 3200/840	50	3260	3030	20.1	151	22.9 / 21.2	1.5	1175	420-700
INNOVA 1.4ft ABS 4400/840	45	4520	4200	27.3	154	24.0 / 22.3	1.5	1175	420-700
INNOVA 1.4ft ABS 6400/840	45	6500	6050	38.5	157	25.3 / 23.6	1.5	1175	420-700
INNOVA 1.4ft ABS 8800/840	40	8980	8350	52.8	158	26.4 / 24.7	1.6	1175	420-700
INNOVA 1.5ft ABS 4000/840	50	4180	3890	25.3	154	23.0 / 21.4	1.8	1455	700-980
INNOVA 1.5ft ABS 5500/840	45	5590	5200	33.3	156	24.0 / 22.4	1.8	1455	700-980
INNOVA 1.5ft ABS 8000/840	45	8020	7460	47.4	157	25.3 / 23.6	1.8	1455	700-980
INNOVA 1.5ft ABS 11000/840	40	11260	10470	64.7	162	26.5 / 24.8	1.9	1455	700-980

INNOVA 1.4ft ABS 3200/840 = suitable replacement for tube light fitting PRIMA 136 ABS - 1 × 36 W

INNOVA 1.4ft ABS 6400/840 = suitable replacement for tube light fitting PRIMA 236 ABS - 2 × 36 W

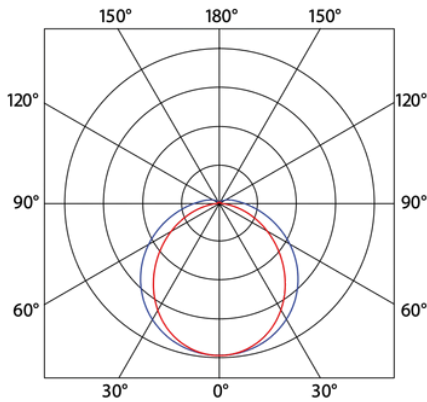
INNOVA 1.5ft ABS 4000/840 = suitable replacement for tube light fitting PRIMA 158 ABS - 1 × 58 W

INNOVA 1.5ft ABS 8000/840 = suitable replacement for tube light fitting PRIMA 258 ABS - 2 × 58 W

INNOVA ABS

Type	1×3P	1×5P	DALI 1×5P	2×3P	2×5P	DALI 2×5P
INNOVA 1.4ft ABS 3200/840	31624	31632	31640	31648	31656	31664
INNOVA 1.4ft ABS 4400/840	31625	31633	31641	31649	31657	31665
INNOVA 1.4ft ABS 6400/840	31626	31634	31642	31650	31658	31666
INNOVA 1.4ft ABS 8800/840	31627	31635	31643	31651	31659	31667
INNOVA 1.5ft ABS 4000/840	31628	31636	31644	31652	31660	31668
INNOVA 1.5ft ABS 5500/840	31629	31637	31645	31653	31661	31669
INNOVA 1.5ft ABS 8000/840	31630	31638	31646	31654	31662	31670
INNOVA 1.5ft ABS 11000/840	31631	31639	31647	31655	31663	31671

PHOTOMETRY



LEGEND

1x3P - a version featuring a non-dimmable ballast and a single 3-pole external terminal block

1x5P - a version featuring a non-dimmable ballast and a single 5-pole external terminal block

DALI 1x5P - a version featuring a digitally dimmable ballast and a single 5-pole external terminal block

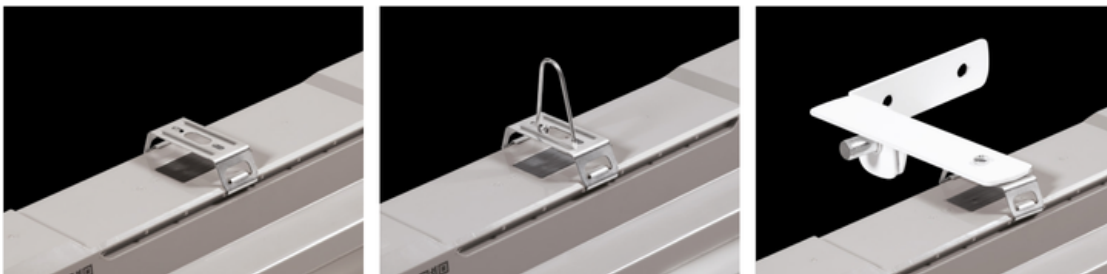
2x3P - a version featuring a non-dimmable ballast, two 3-pole external terminal blocks and 3-wire connecting cables (1F), for continuous row installation

2x5P - a version featuring a non-dimmable ballast, two 5-pole external terminal blocks and 5-wire connecting cables (3F), for continuous row installation

DALI 2x5P - a version featuring a digitally dimmable ballast, two 5-pole external terminal blocks and 5-wire connecting cables (DALI 1F), for continuous row installation

LIGHT FITTING ATTACHMENT

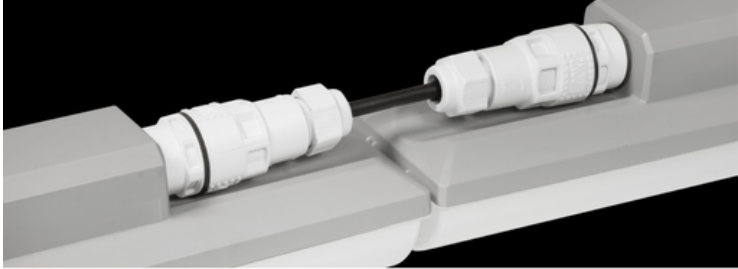
- Directly to a ceiling or a wall with the use of screws and stainless brackets
- Suspension with the use of stainless hooks
- Attachment with the use of side hangers to the wall - is not included in accessories



LIGHT FITTING INTERCONNECTION

An external terminal block is used to ensure the supply cable can easily and quickly be connected with no need to open the light fixture.

Interconnection of light fittings without spacing



LIGHT FITTING DETAILED VIEW

