



**Hazardous**  
Lighting Solutions LTD



# INNOVA

*Dustproof, waterproof, and impact-resistant.*



INDUSTRIAL BUILDINGS



WAREHOUSES



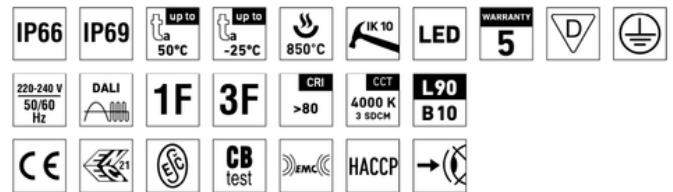
AGRIBUSINESS



PRODUCTION LINES



WASTE INCINERATORS



## MECHANICAL FEATURES

**Housing:** Grey polycarbonate

**Diffuser:** Translucent polycarbonate

**Ingress protection:** IP66/IP69

**Impact strength:** IK10

**Mounting:** Suitable for suspended, ceiling, wall, and surface mounting via stainless hooks and brackets

## ELECTRICAL FEATURES

**Electric equipment:** LED modules, fixed output driver or DALI driver

**Wiring:** Optional through wiring (up to 5 wires inside light fitting)

**Certification:** ESČ, ENEC, CB, HACCP

**Maximum light fitting efficiency:** 164 lm/W

## WORK PARAMETERS

**Ambient Temperatures:** from  
 $t_a = -25\text{ °C}$  to  $t_a = 50\text{ °C}$

**Lifetime:** 50.000h L90 B10  
100 000 hours / L80B10

## PHOTOMETRICAL PARAMETERS

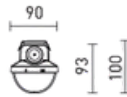
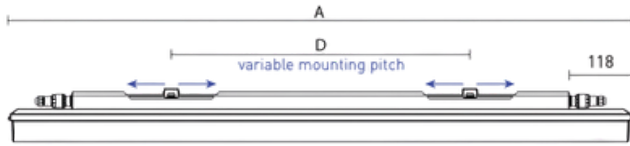
**CRI:** >80 standard

**Colour temperature:** 4000K - standard

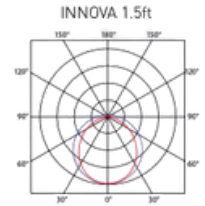
**CRI >80:** 3000K, 5000K, 6500K - on request

**CRI >90:** 3000K, 4000K, 5000, 6500K - on request

## TYPES COMPARISON



**UGR EVALUATED FOR**  
X = 4 H, Y = 8 H S = 0.25 H  
Reflectivity 70/50/20



Type	Max. ambient temperature [°C]	Luminous flux of LED modules [lm]	Luminous flux of light fitting [lm]	Power consumption [W]	System efficacy [lm/W]	Net weight [kg]	A [mm]	D [mm]
INNOVA 1.4ft PC 3200/840	50	3260	3060	20.1	152	1.5	1175	420 – 700
INNOVA 1.4ft PC 4400/840	45	4520	4250	27.3	156	1.5	1175	420 – 700
INNOVA 1.4ft PC 6400/840	45	6500	6110	38.5	159	1.5	1175	420 – 700
INNOVA 1.4ft PC 8800/840	40	8980	8440	52.8	160	1.6	1175	420 – 700
INNOVA 1.5ft PC 4000/840	50	4180	3930	25.3	155	1.8	1455	700 – 980
INNOVA 1.5ft PC 5500/840	45	5590	5250	33.3	158	1.8	1455	700 – 980
INNOVA 1.5ft PC 8000/840	45	8020	7540	47.4	159	1.8	1455	700 – 980
INNOVA 1.5ft PC 11000/840	40	11260	10580	64.7	164	1.9	1455	700 – 980

INNOVA 1.4ft PC 3200/840 = suitable replacement for tube light fitting PRIMA 136 PC - 1 x 36 W

INNOVA 1.4ft PC 6400/840 = suitable replacement for tube light fitting PRIMA 236 PC - 2 x 36 W

INNOVA 1.5ft PC 4000/840 = suitable replacement for tube light fitting PRIMA 158 PC - 1 x 58 W

INNOVA 1.5ft PC 8000/840 = suitable replacement for tube light fitting PRIMA 258 PC - 2 x 58 W

Type	1x3P	1x5P	DALI 1x5P	2x3P	2x5P	DALI 2x5P
INNOVA 1.4ft PC 3200/840	31515	31523	31531	31539	31547	31555
INNOVA 1.4ft PC 4400/840	31516	31524	31532	31540	31548	31556
INNOVA 1.4ft PC 6400/840	31517	31525	31533	31541	31549	31557
INNOVA 1.4ft PC 8800/840	31518	31526	31534	31542	31550	31558
INNOVA 1.5ft PC 4000/840	31519	31527	31535	31543	31551	31559
INNOVA 1.5ft PC 5500/840	31520	31528	31536	31544	31552	31560
INNOVA 1.5ft PC 8000/840	31521	31529	31537	31545	31553	31561
INNOVA 1.5ft PC 11000/840	31522	31530	31538	31546	31554	31562

E.&O.E

## LEGEND

**1x3P** - a version featuring a non-dimmable driver and a single 3-pole external terminal block

**1x5P** - a version featuring a non-dimmable driver and a single 5-pole external terminal block

**DALI 1x5P** - a version featuring a digitally dimmable driver and a single 5-pole external terminal block

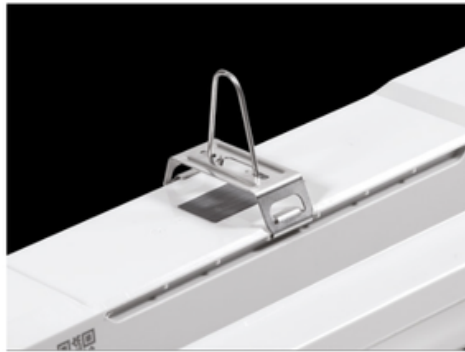
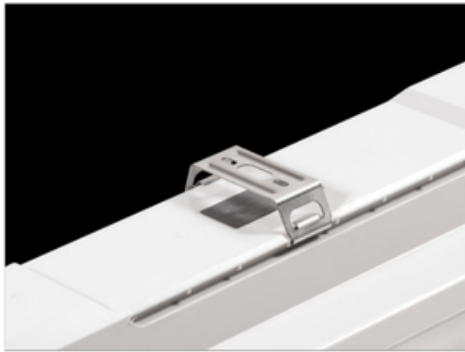
**2x3P** - a version featuring a non-dimmable driver, two 3-pole external terminal blocks and 3-wire connecting cables (1F), for continuous row installation

**2x5P** - a version featuring a non-dimmable driver, two 5-pole external terminal blocks and 5-wire connecting cables (3F), for continuous row installation

**DALI 2x5P** - a version featuring a digitally dimmable driver, two 5-pole external terminal blocks and 5-wire connecting cables (DALI 1F), for continuous row installation

## LIGHT FITTING ATTACHMENT

- a) Directly to a ceiling or a wall with the use of screws and stainless brackets
- b) Suspension with the use of stainless hooks
- c) Attachment with the use of side hangers to the wall - is not included in accessories



## VARIABLE INSTALLATION PITCH



## LIGHT FITTING INTERCONNECTION

An external terminal block is used to ensure the supply cable can easily and quickly be connected with no need to open the light fixture.

Interconnection of light fittings without spacing



## LIGHT FITTING DETAILED VIEW

INNOVA PC

