



Hazardous
Lighting Solutions LTD



TNL300LED

Evacuation light fixture with
LED modules.



CERTIFICATE: CNBOP 4378/2021

MECHANICAL FEATURES

Housing: Stainless steel

Diffuser: Tempered glass

Ingress protection: IP69

Protection class: I

Mounting: 4 holes

Shock Resistance: IK08

ELECTRICAL FEATURES

Source of light: LED modules with ENEC certificate

Voltage: 220-240V 50-60Hz | 176-280V 0Hz

Cable glands: max 4 x M32

Connection terminals: 4 mm²

Control System: Integrated DALI driver
Emergency power supply: from central battery

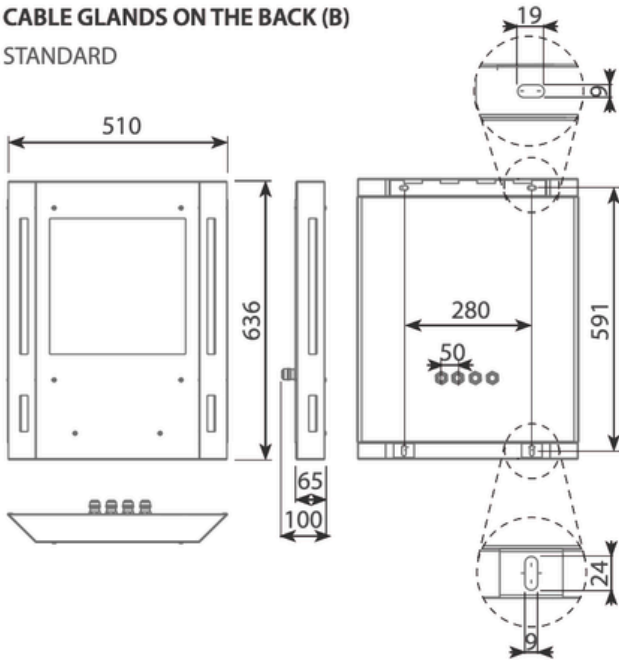
WORK PARAMETERS

Ambient Temperatures: -25°C to + 50°C

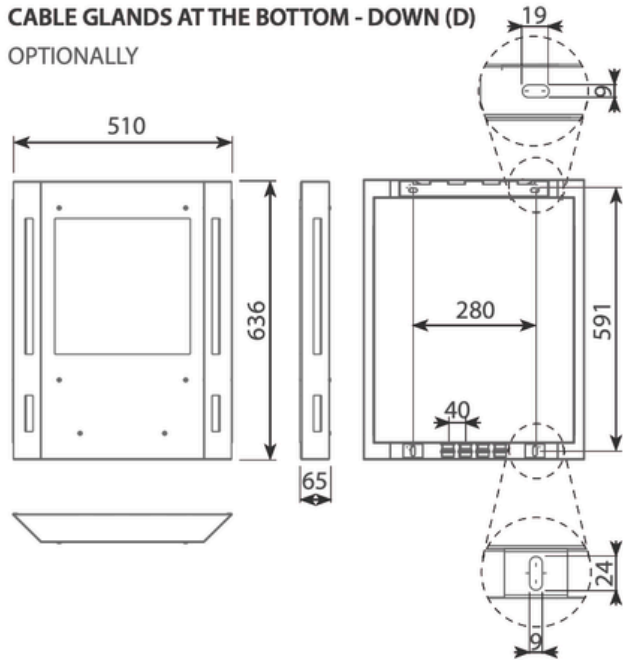
Lifetime: 70.000h L80 B10

DIMENSIONS

CABLE GLANDS ON THE BACK (B)
STANDARD



CABLE GLANDS AT THE BOTTOM - DOWN (D)
OPTIONALLY



TYPES COMPARISON



V1 - variant with additional illumination of the evacuating route.







V2 - basic illumination variant.

TYPE	LUMINANCE [cd/m ²]	ADDITIONAL LUMINOUS FLUX [lm]	POWER [W]	AMB. TEMP. [°C]
TNL300LED-0300-V1	>200	603	21,4 + 8,2	-25 ÷ +50
TNL300LED-0300-V2	>200	nie dotyczy	214	-25 ÷ +50

OPTIONAL VERSIONS



Exemplary configuration:
pictogram - emergency telephone.

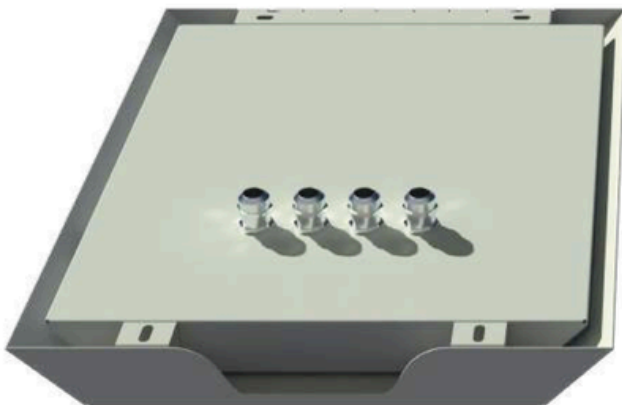
- Customised pictograms

- Housing made of steel type 304

- Housing made of steel type 316

- Housing made of steel type 316 TI


EXEMPLARY PICTOGRAMS



CABLE GLANDS POSITIONS

ON THE BACK (B)
STANDARD



AT THE BOTTOM - DOWN (D)
OPTIONALLY



PHOTOMETRY

