



Hazardous
Lighting Solutions LTD



TREX

For explosion hazard environment group II, category 2
(zone 1, 21 and 2, 22)



OFFSHORE



CHEMICAL
WAREHOUSES



PASSAGEWAYS



CLEANROOM



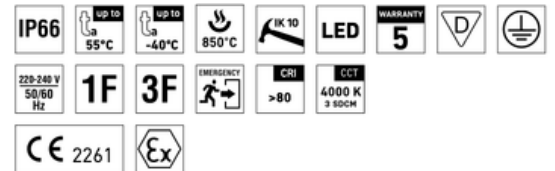
CHEMICAL



REFINERIES



PHARMACEUTICAL



II 2G Ex eb mb op is IIC T5 Gb
II 2D Ex tb op is IIC T55°C Db or T70°C Db

Certificate: CNBOP no. 3529/2019

MECHANICAL FEATURES

Housing: Powder-coated steel sheet RAL 9003,
or INOX (AISI 304)

Diffuser: Satinated tempered safety glass

Ingress protection: IP66

Impact strength: IK10

Mounting: Includes suspensory eyes 2 x M6,
suitable for ceiling and wall

ELECTRICAL FEATURES

Wiring: Optional through-wiring of up to 7 wires
at reflector

Cable glands: Metal or armoured ATEX cable
glands M20 × 1,5 or M25 × 1,5

Certification: CE, ATEX TÜV CY 21 ATEX
0206562X - TrEx, TrEx Mxh

Maximum system efficacy: 147 lm/W

WORK PARAMETERS

Ambient Temperatures: -40°C to +55°C

Lifetime: 75.000h L80 B50

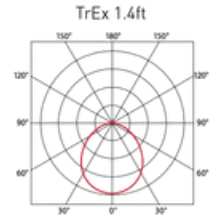
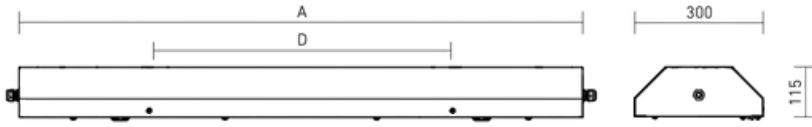
PHOTOMETRICAL PARAMETERS

CRI: >80

Colour temperature: 4000K - standard

On request CRI: >80: 3000K, 5000K, 5700K

TYPES COMPARISON



Type	Min. and max. ambient temperature (°C)	Luminous flux of LED modules (lm)	Luminous flux of light fitting (lm)	System input (W)	System efficiency (lm/W)	Net weight (kg)	A (mm)	D (mm)
TrEx 1.2ft 3200/840	-40 / 55	2800	2350	19	123	8.3	730	350
TrEx 1.2ft 4400/840	-40 / 55	4000	3360	27	124	8.3	730	350
TrEx 1.4ft 6400/840	-40 / 55	5600	4700	35	134	14.6	1300	700
TrEx 1.4ft 8800/840	-40 / 55	8000	6720	50	134	14.6	1300	700
TrEx 1.5ft 8000/840	-40 / 55	7000	5880	40	147	17.3	1580	700
TrEx 1.5ft 11000/840	-40 / 55	10000	8400	59	142	17.3	1580	700
TrEx 2.2ft 6400/840	-40 / 55	5600	4700	35	134	8.9	730	350
TrEx 2.2ft 8800/840	-40 / 50	8000	6720	50	134	8.9	730	350
TrEx 2.4ft 12800/840	-40 / 55	11200	9400	67	140	16	1300	700
TrEx 2.4ft 17600/840	-40 / 50	16000	13440	100	134	16	1300	700
TrEx 2.5ft 16000/840	-40 / 55	14000	11760	80	147	18.9	1580	700
TrEx 2.5ft 22000/840	-40 / 50	20000	16800	121	138	18.9	1580	700

Type	Min. and max. ambient temperature (°C)	Emergency light flux of light fitting 1h (lm)	Emergency light flux of light fitting 3h (lm)	Power in standby mode (W)	Battery type	Net weight (kg)
TrEx 1.2ft 4400/840 M3h	0 / 40	990	630	2	NiCd HT	1.3
TrEx 1.4ft 8800/840 M3h	0 / 40	790	580	2	NiCd HT	1.3

TREX DIS

LIGHT FITTING WITHOUT DISCONNECTOR

Code	Type	1F	3F	M3h	3F M3h
10339	TrEx 1.2ft 3200/840 DIS	10357	10379	x	-
10341	TrEx 1.2ft 4400/840 DIS	10358	10382	10429	10451
10342	TrEx 1.4ft 6400/840 DIS	10359	10388	x	-
10343	TrEx 1.4ft 8800/840 DIS	10361	10389	10438	10453
10346	TrEx 1.5ft 8000/840 DIS	10362	10392	x	-
10347	TrEx 1.5ft 11000/840 DIS	10363	10398	x	-
10348	TrEx 2.2ft 6400/840 DIS	10366	10399	x	-
10349	TrEx 2.2ft 8800/840 DIS	10367	10402	x	-
10351	TrEx 2.4ft 12800/840 DIS	10368	10404	x	-
10352	TrEx 2.4ft 17600/840 DIS	10369	10405	x	-
10353	TrEx 2.5ft 16000/840 DIS	10372	10406	x	-
10356	TrEx 2.5ft 22000/840 DIS	10378	10407	x	-

LEGEND

1F 1- phase 3 core through-wiring in the luminaire

3F 3- phase 5 core through-wiring in the luminaire

M3h- emergency back-up source with 3 hour operating time for maintained emergency illumination

3F M3h- 3-phase 5 core through-wiring in the luminaire (L3 used for emergency unit unswitched power supply)

DIS- light fitting with disconnecter

TREX LIGHT FITTING WITHOUT DISCONNECTOR

Code	Type	1F	3F	M3h	3F M3h
10219	TrEx 1.2ft 3200/840	10237	10253	x	x
10222	TrEx 1.2ft 4400/840	10238	10256	10298	10334
10224	TrEx 1.4ft 6400/840	10239	10257	x	-
10225	TrEx 1.4ft 8800/840	10241	10258	10302	10336
10226	TrEx 1.5ft 8000/840	10242	10259	x	-
10227	TrEx 1.5ft 11000/840	10243	10262	x	-
10228	TrEx 2.2ft 6400/840	10246	10268	x	-
10229	TrEx 2.2ft 8800/840	10247	10269	x	-
10231	TrEx 2.4ft 12800/840	10248	10272	x	-
10232	TrEx 2.4ft 17600/840	10249	10278	x	-
10233	TrEx 2.5ft 16000/840	10251	10279	x	-
10236	TrEx 2.5ft 22000/840	10252	10282	x	-

TREX DIS INOX LIGHT FITTING WITH DISCONNECTOR, BODY STEEL SHEET GRADE AISI 304

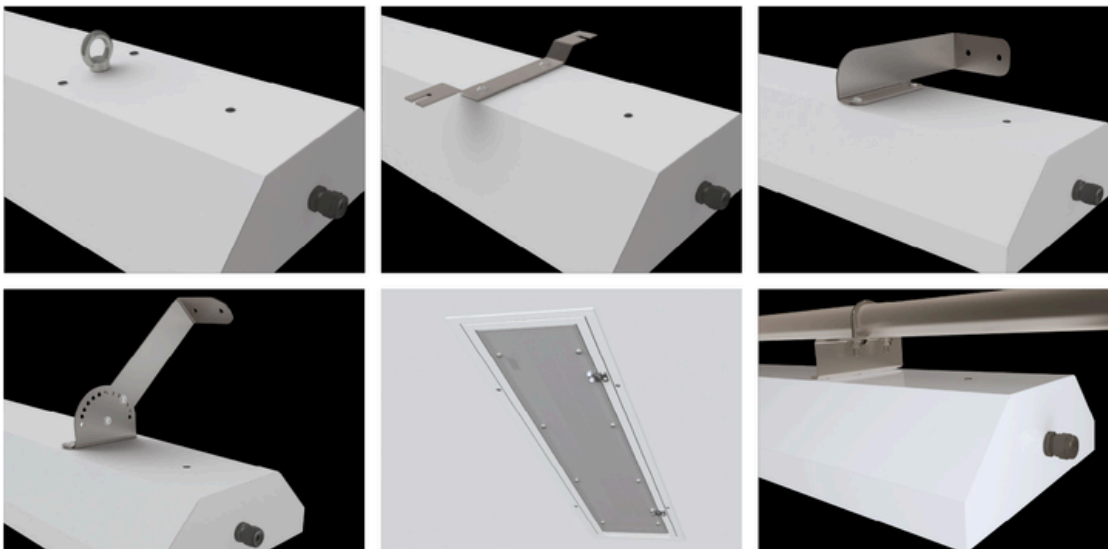
Code	Type	1F	3F	M3h	3F M3h
10519	TrEx 1.2ft 3200/840 DIS INOX	10537	10572	x	x
10521	TrEx 1.2ft 4400/840 DIS INOX	10538	10574	10616	10632
10522	TrEx 1.4ft 6400/840 DIS INOX	10539	10575	x	-
10523	TrEx 1.4ft 8800/840 DIS INOX	10542	10576	10618	10636
10526	TrEx 1.5ft 8000/840 DIS INOX	10548	10577	x	-
10527	TrEx 1.5ft 11000/840 DIS INOX	10549	10578	x	-
10528	TrEx 2.2ft 6400/840 DIS INOX	10552	10579	x	-
10529	TrEx 2.2ft 8800/840 DIS INOX	10558	10582	x	-
10531	TrEx 2.4ft 12800/840 DIS INOX	10559	10588	x	-
10532	TrEx 2.4ft 17600/840 DIS INOX	10562	10589	x	-
10533	TrEx 2.5ft 16000/840 DIS INOX	10568	10592	x	-
10536	TrEx 2.5ft 22000/840 DIS INOX	10569	10598	x	-

TREX INOX

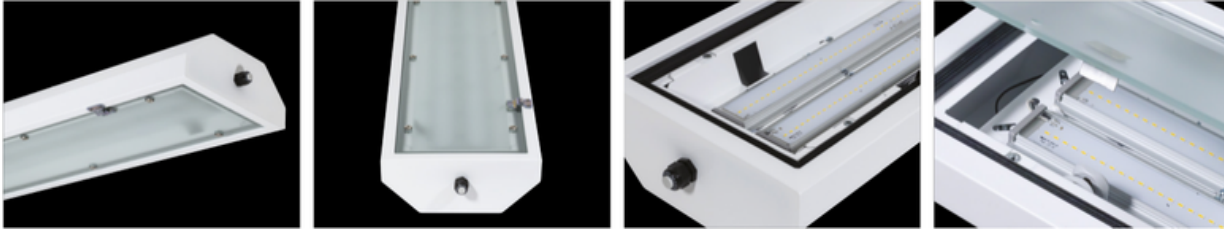
Code	Type	1F	3F	M3h	3F M3h
10456	TrEx 1.2ft 3200/840 INOX	10468	10480	x	-
10457	TrEx 1.2ft 4400/840 INOX	10469	10481	10499	10512
10458	TrEx 1.4ft 6400/840 INOX	10470	10482	x	-
10459	TrEx 1.4ft 8800/840 INOX	10471	10483	10501	10516
10460	TrEx 1.5ft 8000/840 INOX	10472	10484	x	-
10461	TrEx 1.5ft 11000/840 INOX	10473	10485	x	-
10462	TrEx 2.2ft 6400/840 INOX	10474	10486	x	-
10463	TrEx 2.2ft 8800/840 INOX	10475	10487	x	-
10464	TrEx 2.4ft 12800/840 INOX	10476	10488	x	-
10465	TrEx 2.4ft 17600/840 INOX	10477	10489	x	-
10466	TrEx 2.5ft 16000/840 INOX	10478	10490	x	-
10467	TrEx 2.5ft 22000/840 INOX	10479	10491	x	-

LIGHT FITTING ATTACHMENT

- a) Suspension eyes 2 × M6 - in standard model
- b) Holders directly on the ceiling
- c) Side suspensions on the wall
- d) Adjustable side suspensions on the wall
- e) Recessed frame for false ceiling
- f) Holders on tube structures



LIGHT FITTING DETAILED VIEW



PHOTOMETRY

