



Hazardous
Lighting Solutions LTD



TRITEX



Linear LED lighting fixture in aluminium.
Available emergency variant -60°C to +60°C



OFFSHORE



ONSHORE



AGRIBUSINESS



CHEMICAL



LOW TEMP.



NAVAL

CE 0722 II 2GD - Ex db eb mb IIC T.. Gb - Ex tb IIIC T..°C Db - IP66

CE Ex II 3G - Ex nR IIC T.. Gc

CE 0722 Ex II 2D - Ex tb IIIC T..°C Db - IP66

MECHANICAL FEATURES

Body: Aluminium alloy extrusion and end caps, resistant to atmospheric and marine corrosion

Clear part: Glass resistant to shocks, impact and UV rays

Gaskets: Acid and hydrocarbon resistant silicone

Internal frame: Aluminium extrusion

Screws: Stainless steel

Entry points: Standard version with 4 holes Ø20.5 through Wired + Loop-in-Loop out

Assembly: Fastening brackets for M8 holes, adjustable 0° to ±30°

ELECTRICAL FEATURES

Power unit: Electronic

Rated voltage: 110-277 Vac (for more information, see the Selection tables)

Rated frequency: 50/60 Hz

Connection: Directly to the terminal board L, N, Pe cross sec. max. 4 mm² jumpered terminal board suitable for in-out from a single side

Emergency unit: Electronic inverter 110/277 Vac 50/60 Hz, 110/270 Vdc. Batteries Ni/Mh, 1.8 Ah or 3 Ah, 6V Battery charging monitored by high luminosity green LED

Cabling: Rigid cables for high temperatures

CERTIFICATE DATA

Ambient Temperatures: -60°C for versions without battery, -20°C/-60°C for versions with battery

PHOTOMETRICAL PARAMETERS

CRI: >80

Colour temperature: 5000 K

SELECTION TABLE: Temperature classes and maximum surface temperatures (Z1)

NORMAL OPERATION

Code	Real Power (W)	Rated Power (W)	Supply Voltage	+40°C Temp Class	+50°C Temp Class	+60°C Temp Class	Lumen (lm)	Light Intensity (cd)	Overall Efficiency (Lm/W)	Weight (kg)	Dimensions (mm)
Tritex-Z1-0315	13.9	15	220-240 Vac	T62°C / T6	T67°C / T6	T77°C / T5	1865	738	134	1.5	541 × 103 × 132
Tritex-Z1-0330	26.6	30	220-240 Vac	T58°C / T6	T73°C / T5	T78°C / T4	3697	1345	140	1.5	541 × 103 × 132
Tritex-Z1-0615	15	15	220-240 Vac	T62°C / T6	T67°C / T6	T77°C / T5	2008	777	134	2.5	840 × 103 × 132
Tritex-Z1-0630	26.2	30	110-277 Vac	T85°C / T6	T90°C / T5	T100°C / T4	3677	1345	140	2.5	840 × 103 × 132
Tritex-Z1-0645	43.5	45	220-240 Vac	T88°C / T6	T93°C / T5	-	6200	2248	143	2.5	840 × 103 × 132
Tritex-Z1-0660	54.5	60	220-240 Vac	T100°C / T6	-	-	8011	2924	147	2.5	840 × 103 × 132
Tritex-Z1-1230	29	30	110-277 Vac	T65°C / T6	T70°C / T6	T80°C / T5	4112	1451	142	3.5	1398 × 103 × 132
Tritex-Z1-1260	55.7	60	220-240 Vac	T85°C / T6	T90°C / T5	T100°C / T4	8316	2930	149	3.5	1398 × 103 × 132
Tritex-Z1-1290	79.3	90	120-277 Vac	T94°C / T6	T99°C / T4	T109°C / T4	12228	4323	154	3.5	1398 × 103 × 132
Tritex-Z1-12120	102.6	120	220-277 Vac	T96°C / T5	T101°C / T4	-	16029	5662	156	3.4	1398 × 103 × 132
Tritex-Z1-1590	78.6	90	120-277 Vac	T94°C / T6	T99°C / T4	T109°C / T4	11926	4204	152	4	1738 × 103 × 132

NORMAL OPERATION + EMERGENCY

Code	Real Power (W)	Rated Power (W)	Supply Voltage	+40°C Temp Class	+50°C Temp Class	+60°C Temp Class	Lumen (lm)**	Discharge Time (min)	Weight (kg)	Dimensions (mm)
Tritex-Z1-0615N	15	15	220-240 Vac	T62°C / T6	T67°C / T6	T77°C / T5	980	90	3	840 × 103 × 132
Tritex-Z1-0630N	26.2	30	220-240 Vac	T85°C / T6	T90°C / T5	T100°C / T4	980	90	3	840 × 103 × 132
Tritex-Z1-1230N*	29	30	110-277 Vac	T65°C / T6	T70°C / T6	T80°C / T6	994	180	4.5	1398 × 103 × 132
Tritex-Z1-1260N*	55.7	60	220-240 Vac	T85°C / T6	T90°C / T5	T100°C / T4	994	180	4.5	1398 × 103 × 132
Tritex-Z1-1590N*	78.6	90	120-277 Vac	T94°C / T6	T99°C / T4	T109°C / T4	932	180	5	1738 × 103 × 132

EMERGENCY OPTION ONLY

Code	Supply Voltage	+40°C Temp Class	+50°C Temp Class	+60°C Temp Class	Lumen (lm)	Discharge Time (min)	Weight (kg)	Dimensions (mm)
Tritex-Z1-0615E*	110-277 Vac	T62°C / T6	T67°C / T6	T77°C / T5	1167	90	2.5	840 × 103 × 132
Tritex-Z1-1230E*	110-277 Vac	T65°C / T6	T70°C / T6	T80°C / T5	1151	90	3.5	1398 × 103 × 132

E.&O.E

SELECTION TABLE: Temperature classes and maximum surface temperatures (Z2)

NORMAL OPERATION

Code	Real Power (W)	Rated Power (W)	Supply Voltage	+40°C Max Surface Temp	+50°C Max Surface Temp	+60°C Max Surface Temp	Lumen (lm)	Light Intensity (cd)	Overall Efficiency (Lm/W)	Weight (kg)	Dimensions (mm)
Tritex-Z2-0615	15	15	220-240 Vac	T62°C / T6	T67°C / T6	T77°C / T5	2008	777	134	2	840 × 103 × 132
Tritex-Z2-0630	26.2	30	220-240 Vac	T85°C / T6	T90°C / T5	T100°C / T4	3677	1345	140	2	840 × 103 × 132
Tritex-Z2-0645	43.5	45	220-240 Vac	T88°C / T6	T93°C / T5	-	6200	2248	143	2	840 × 103 × 132
Tritex-Z2-0660	54.5	60	220-240 Vac	T100°C / T6	-	-	8011	2924	147	2	840 × 103 × 132
Tritex-Z2-1230	29	30	220-240 Vac	T65°C / T6	T70°C / T6	T80°C / T5	4112	1451	142	3	1398 × 103 × 132
Tritex-Z2-1260	55.7	60	220-240 Vac	T85°C / T6	T90°C / T5	T100°C / T4	8316	2930	149	3	1398 × 103 × 132
Tritex-Z2-1290	79.3	90	220-240 Vac	T94°C / T6	T99°C / T4	T109°C / T4	12228	4323	154	3	1398 × 103 × 132
Tritex-Z2-1590	78.6	90	220-240 Vac	T94°C / T6	T99°C / T4	T109°C / T4	11926	4204	152	3.5	1738 × 103 × 132

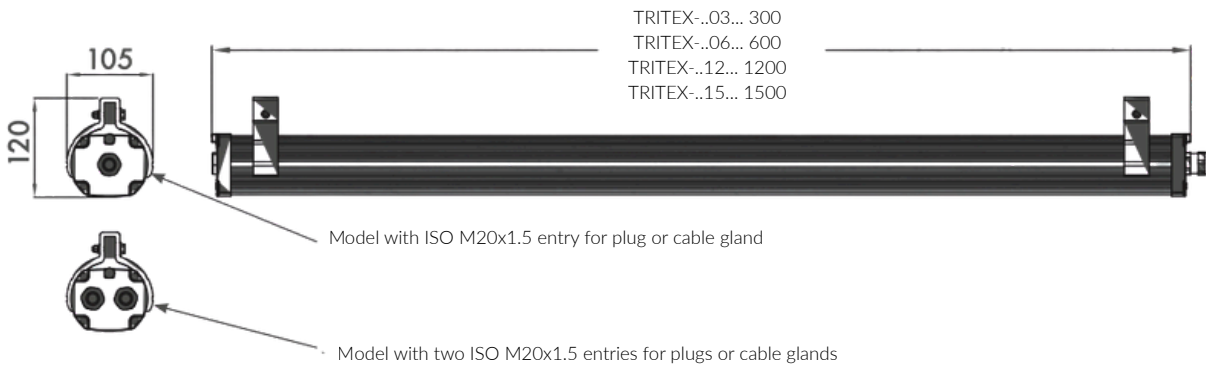
NORMAL OPERATION + EMERGENCY

Code	Real Power (W)	Rated Power (W)	Supply Voltage	+40°C Max Surface Temp	+50°C Max Surface Temp	+60°C Max Surface Temp	Lumen (lm)	Discharge Time (min)	Weight (kg)	Dimensions (mm)
Tritex-Z2-0615N	15	15	220-240 Vac	T62°C / T6	T67°C / T6	T77°C / T5	980	90	3	840 × 103 × 132
Tritex-Z2-0630N	26.2	30	220-240 Vac	T85°C / T6	T90°C / T5	T100°C / T4	980	90	3	840 × 103 × 132
Tritex-Z2-1230N*	29	30	220-240 Vac	T65°C / T6	T70°C / T6	T80°C / T5	994	180	4.5	1398 × 103 × 132
Tritex-Z2-1260N*	55.7	60	220-240 Vac	T85°C / T6	T90°C / T5	T100°C / T4	994	180	4.5	1398 × 103 × 132
Tritex-Z2-1590N*	78.6	90	220-240 Vac	T94°C / T6	T99°C / T4	T109°C / T4	932	180	5	1738 × 103 × 132

EMERGENCY OPTION ONLY

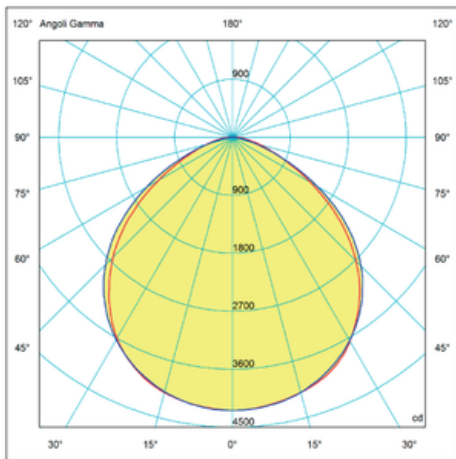
Code	Supply Voltage	+40°C Max Surface Temp	+50°C Max Surface Temp	+60°C Max Surface Temp	Lumen (lm)	Discharge Time (min)	Weight (kg)	Dimensions (mm)
Tritex-Z2-0615E*	110-277 Vac	T62°C / T6	T67°C / T6	T77°C / T5	1167	90	2	840 × 103 × 132
Tritex-Z2-1230E*	110-277 Vac	T65°C / T6	T70°C / T6	T80°C / T5	1151	90	3	1398 × 103 × 132

DIMENSIONAL DRAWING

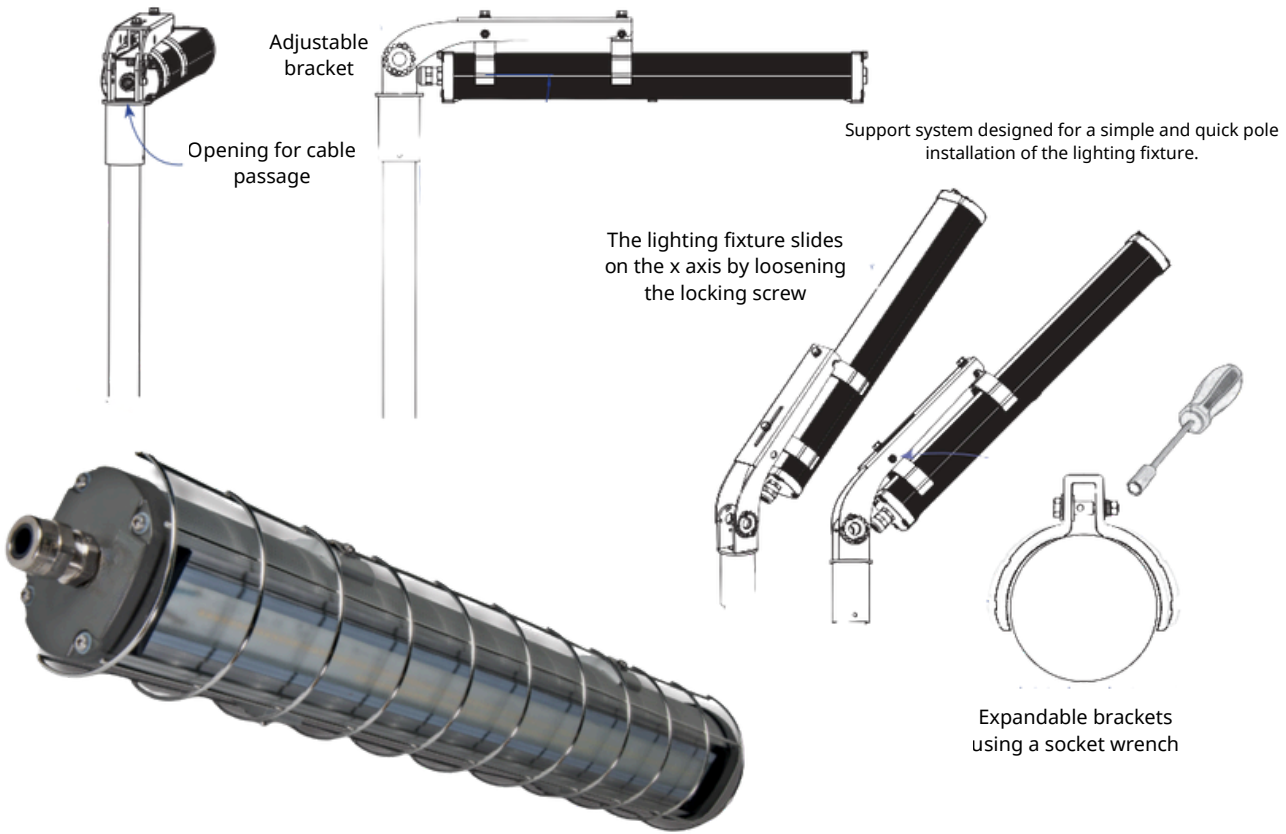


Code	X (mm)	Xm (mm)	Y (mm)	Z (mm)	L x W x H (mm)	Pcs./Box	Box
TRITEX HE 300/0.3...	13.9	15	220-240 Vac	T62°C/T6	T67°C/T5	T77°C/T5	1865
TRITEX HE 600/0.6...	26.6	30	220-240 Vac	T58°C/T6	T73°C/T5	T78°C/T4	3697
TRITEX HE 1200...	15	15	220-240 Vac	T62°C/T6	T67°C/T6	T77°C/T5	2008

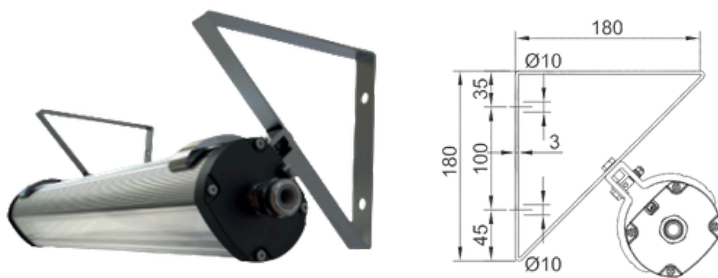
PHOTOMETRY



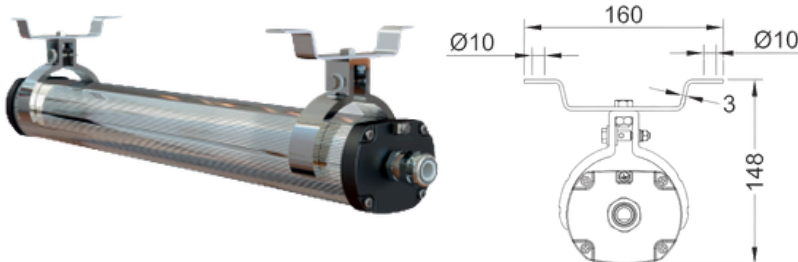
POLE MOUNT MECHANISM



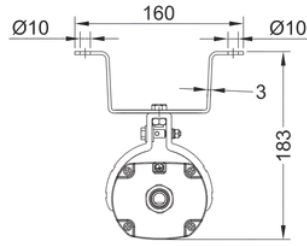
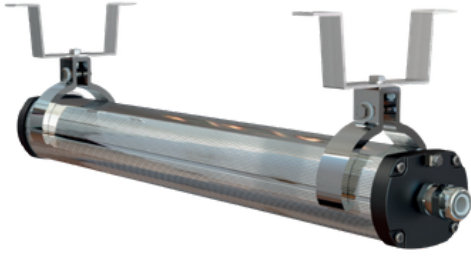
ASSEMBLIES WITH INSTALLATION ACCESSORIES



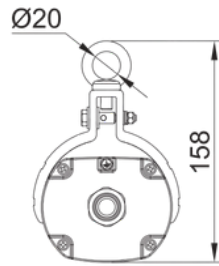
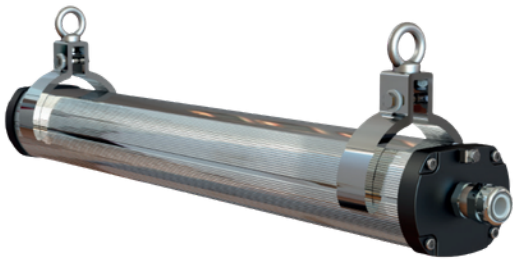
45° corner mount TYPE "D"



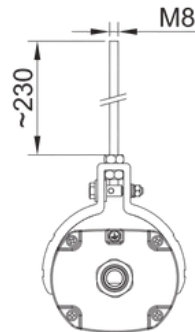
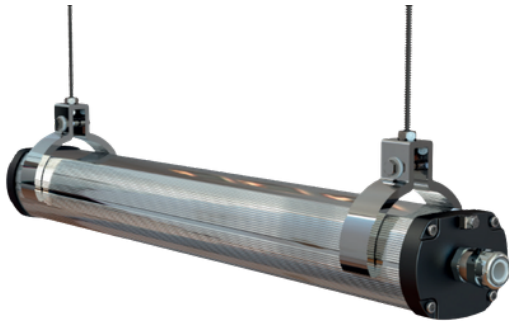
Ceiling mount, tall model TYPE "U"



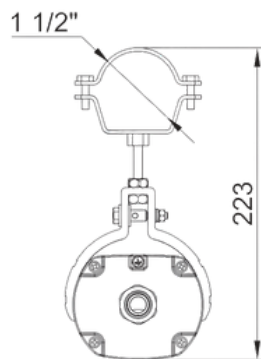
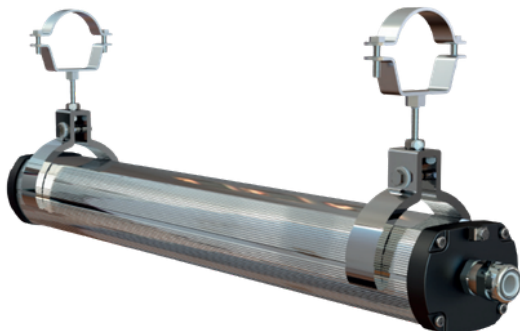
Ceiling mount, tall model TYPE "V"



Suspended mount with eye bolt TYPE "O"



Ceiling mount with 250 mm rod



Mount with metal clamps 1 1/2" TYPE "P"