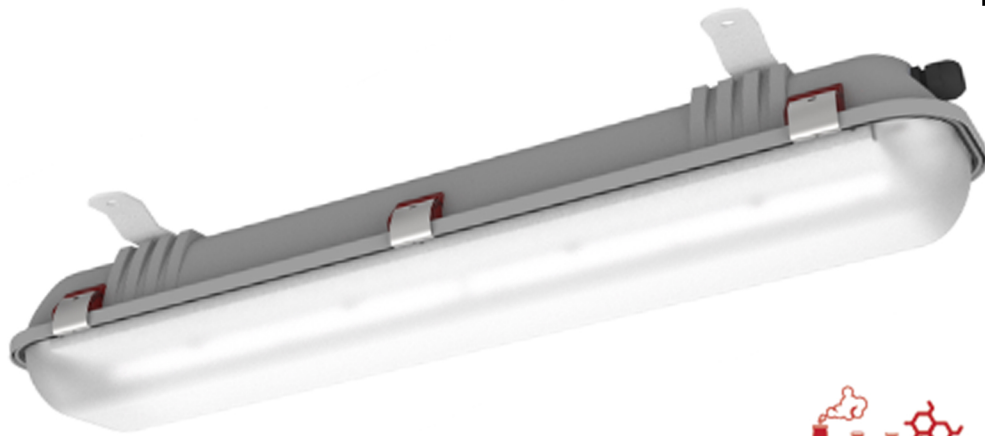


EXPLOSIONPROOF LIGHT FITTINGS



REFINERIES



OFFSHORE



CHEMICAL
PLANTS



CHEMICAL
WAREHOUSES



PASSAGeways
IN EX ZONES



EX MARKING:



II 2G Ex eb mb op is IIC T5 Gb
II 2D Ex tb op is IIIC T55°C Db or T70°C Db

CERTIFICATE:

CNBOP no. 3529/2019

MECHANICAL PARAMETERS

Housing: glass fibre reinforced polyester (GRP)
Diffuser: polymethyl methacrylate (PMMA) or
UV stabilised polycarbonate
Ingress protection: IP66, IP67
Protection class: I
Mounting: on the surface or with connections

WORK PARAMETERS

Ambient temperature: -40°C to +60°C
Lifetime: >70.000h L80 B10

ELECTRICAL PARAMETERS

Connection terminals: 2,5mm²
Input voltage: 110-254V 50-60Hz,
220-250V 0Hz
Light source: intrinsically safe LED
modules
Power factor: >0,97
Cable inlets: Ø20
Overvoltage protection: 2kV

PHOTOMETRICAL PARAMETERS

CRI: >80
Colour temperature: 6500K
4000K- option

DIMENSIONS



TYPES	L [mm]	L1 [mm]	B [mm]	B1 [mm]	H [mm]	APPROX. WEIGHT
EXF250LED-0600	700	450	190	160	129	6kg
EXF250LED-1200	1300	800	190	160	129	10kg

TYPES COMPARISON

VERSION HIGH OUTPUT (HO) +45°C

TYPE OF THE LIGHTING	LUMINOUS FLUX [lm]	POWER SUPPLY [W]	EFFICIENCY [lm/W]	MAX. AMB. TEMP. [°C]
EXF250LED-0600-F1	1869	21,2	87	45
EXF250LED-0600-F2	3816	38,6	100	45
EXF250LED-1200-F2	4104	38,6	104	45
EXF250LED-1200-F4	7753	78,1	100	45

VERSION HIGH TEMPERATURE (HT) +55°C

TYPE OF THE LIGHTING	LUMINOUS FLUX [lm]	POWER SUPPLY [W]	EFFICIENCY [lm/W]	MAX. AMB. TEMP. [°C]
EXF250LED-1200-G4	4840	47,0	106	55

VERSION HIGH TEMPERATURE (HT) +60°C

TYPE OF THE LIGHTING	LUMINOUS FLUX [lm]	POWER SUPPLY [W]	EFFICIENCY [lm/W]	MAX. AMB. TEMP. [°C]
EXF250LED-0600-G2	2566	25,3	102	60
EXF250LED-1200-G2	2468	25,3	98	60

MEAN EMERGENCY MODE LUMINOUS FLUX

TYPE OF THE FITTING	VERSION A3 [lm]	VERSION ZB [lm]
EXF250LED-0600-F1	88	1869
EXF250LED-0600-F2	179	3816
EXF250LED-0600-G2	121	2566
EXF250LED-1200-F2	193	4104
EXF250LED-1200-F4	193	7753
EXF250LED-1200-G2	116	2468
EXF250LED-1200-G4	227	4840



ADDITIONAL PICTOGRAM



Self-adhesive pictograms can be added to the order optionally.

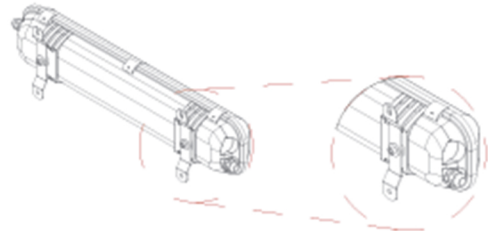


MOUNTING



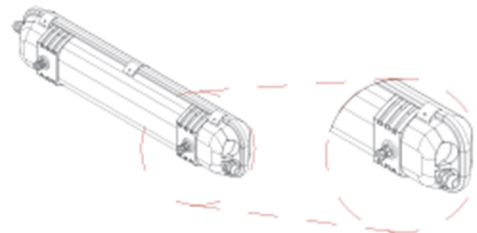
AM01

standard mounting bracket made of 1.5mm thick steel, mounting hole spacing 160mm



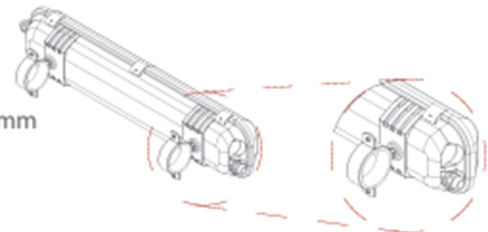
BK

standard bolt kit made to install the light fitting on the thin surfaces or the cable trays



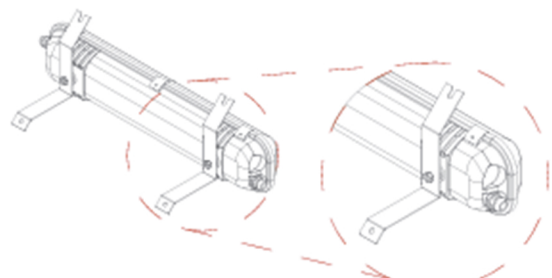
AM03

stainless steel hoop for pipe of diameter: 26-30mm, 31-36mm, 41-46mm, 47-52mm, 59-64mm
Please indicate size when ordering



AM04

bracket for installation at 45°



AM05

68mm distance bracket

