



INP325LED



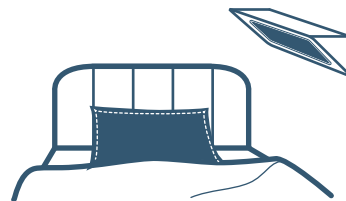


CERTIFICATES: CE

EXEMPLARY APPLICATIONS



PENAL INSTITUTIONS




INDIVIDUAL LIGHTING







Custodial LED light fitting with high impact resistance factor (IK11+). Destined to illuminate cells. The fixture is equipped with a socket and additional on/off switch can be added as an option. INP325LED is designed to be mounted on the wall. Robust construction and special security screws (snake eye) prevents unauthorized access. The fixture is characterized by the high security for the users. Construction is designed to prevent from the injuries and acts of suicide.

FEATURES



MECHANICAL PARAMETERS

	housing	powder coated galvanized steel sheet
	diffuser	thick polycarbonate
	shock resistance	IK11+ (150J)
	ingress protection	IP65
	protection class	I
	mounting	4 holes, easy mounting

ELECTRICAL PARAMETERS

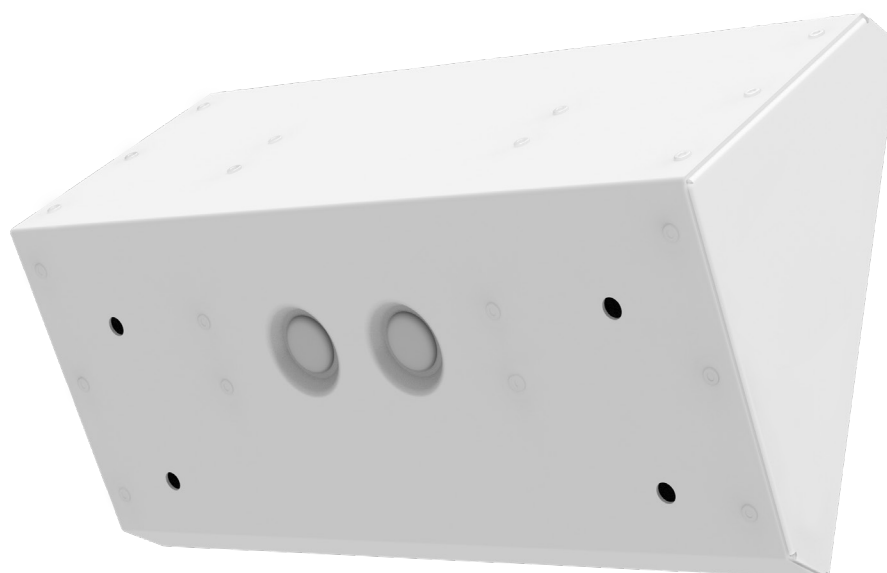
2,5 mm ²		connection terminals
230V 0/50-60Hz		input voltage
LED modules with ENEC certificate		light source
>0,95		power factor
2 x Ø20		cable inlets
1kV		overvoltage protection

WORK PARAMETERS

	ambient temperature	-20°C to +50°C
	lifetime	>72.000h L ₈₀ F ₁₀

PHOTOMETRICAL PARAMETERS

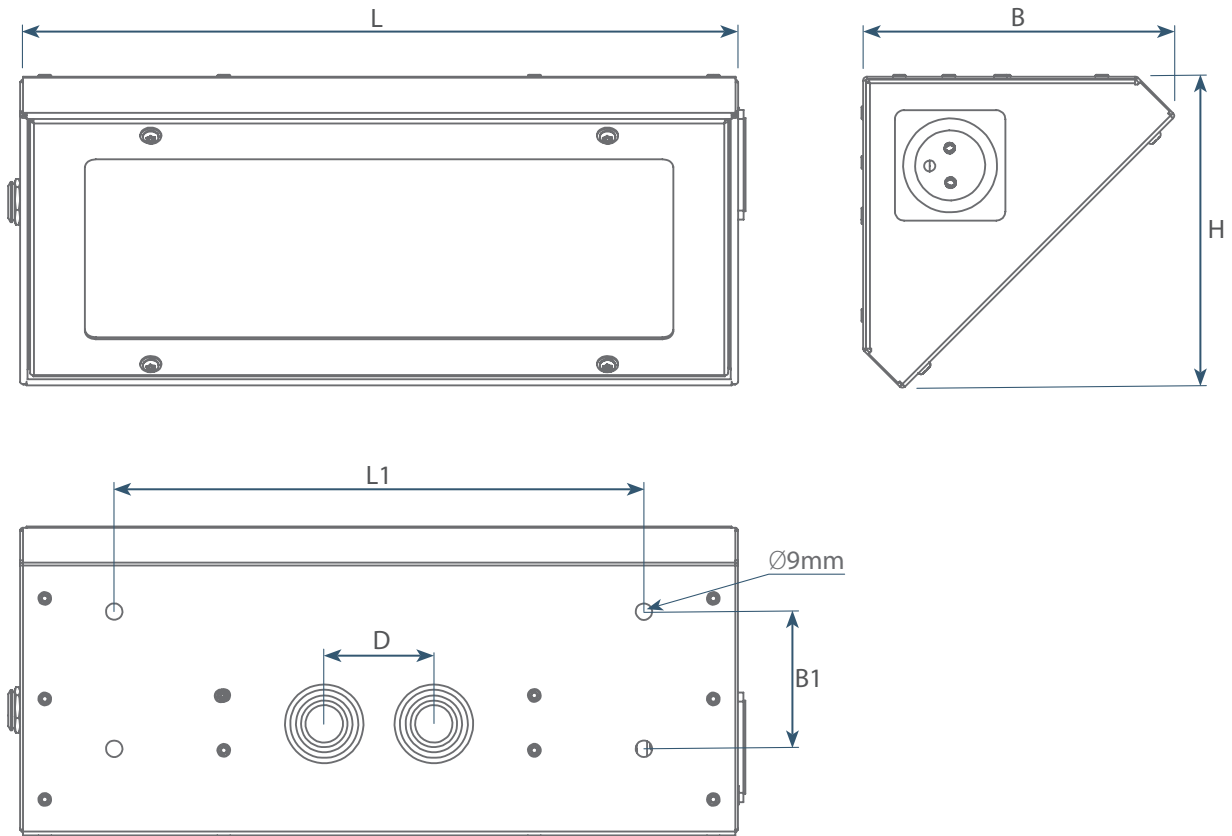
>80		CRI
4000K		colour temperature



Attention:

Cable inlets have been located in a recess to allow installation of the fixture directly to the wall.

DIMENSIONS



TYPE OF LIGHT FITTING	L [mm]	L1 [mm]	B [mm]	B1 [mm]	H [mm]	D [mm]	weight [kg]
INP325LED	390	290	170	75	170	60	~5,5

weight of standard version

TECHNICAL DATA

TYPE OF LIGHT FITTING	LUMINOUS FLUX [lm]	POWER [W]	EFFICIENCY [lm/W]	AMB. TEMP. [°C]
INP325LED-M1-1	540	5,3	102	-20 ÷ +50
INP325LED-M2-1	1080	10,3	105	-20 ÷ +50
INP325LED-A1-1	1080	10,3	104	-20 ÷ +50
INP325LED-A2-1	2160	18,6	116	-20 ÷ +50



Luminous flux tolerance +/- 10%

Power tolerance +/- 10%

The parameters given in the following data sheet has been determined for the temperature Ta=25°C.

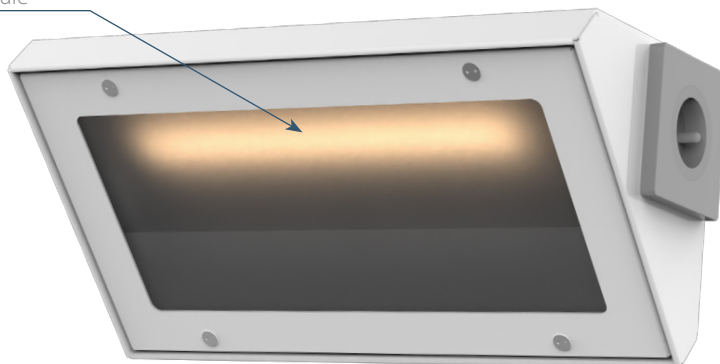
Luminous flux, light intensity distribution and efficiency has been tested on the basis of the standards EN ISO 17025:2018-02, norm series EN13032 and LM-79.

The actual data and General Warranty Conditions are available on our website www.atmlighting.pl

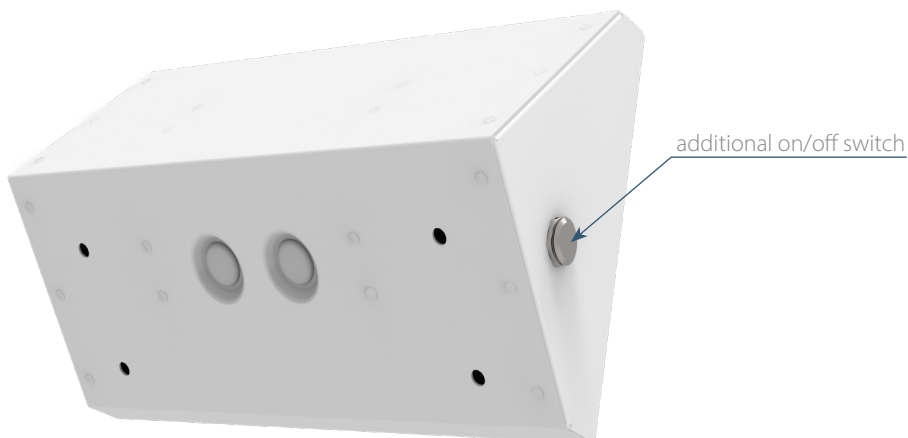
OPTIONAL VERSIONS

NIGHT LIGHT Night light: Night light version allows to turn off part of the LED modules, which saves energy while maintaining constant lighting in night conditions.

additional night light module for night time surveillance



Switch: Additional switch allows individual control of the light



PHOTOMETRY

