

INDUSTRIAL PLASTIC LUMINAIRES



... dustproof, waterproof and chemically resistant.

MECHANICAL PARAMETERS

Housing: dark grey ABS (high chemical resistance, UV stability, RAL 7001)
Diffuser: translucent ABS (high chemical resistance, UV stability)
Ingress protection: IP66/ IP69
Impact strength: IK10
Mounting: suitable for suspended, ceiling, wall, and surface mounting with stainless hooks and stainless brackets

WORK PARAMETERS

Ambient temperature: from -25°C up to +50°C
Lifetime: 50.000h L90 B10

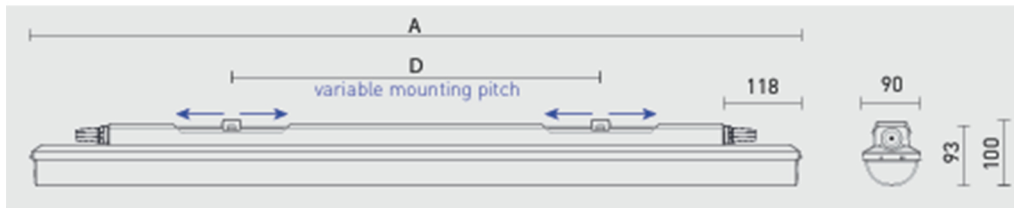
ELECTRICAL PARAMETERS

Electric equipment: LED modules, fixed output driver or DALI driver
Wiring: optional through wiring (up to 5 wires inside the light fitting)
Certification: CE, ENEC, CB, ESČ, HACCP, DLG

PHOTOMETRICAL PARAMETERS

CRI: >80
Colour temperature: 4000K- standard
CRI > 80: 3000K, 5000K, 6500K - on request
CRI > 90: 3000K, 4000K, 5000K, 6500K - on request

DIMENSIONS



TYPES COMPARISON

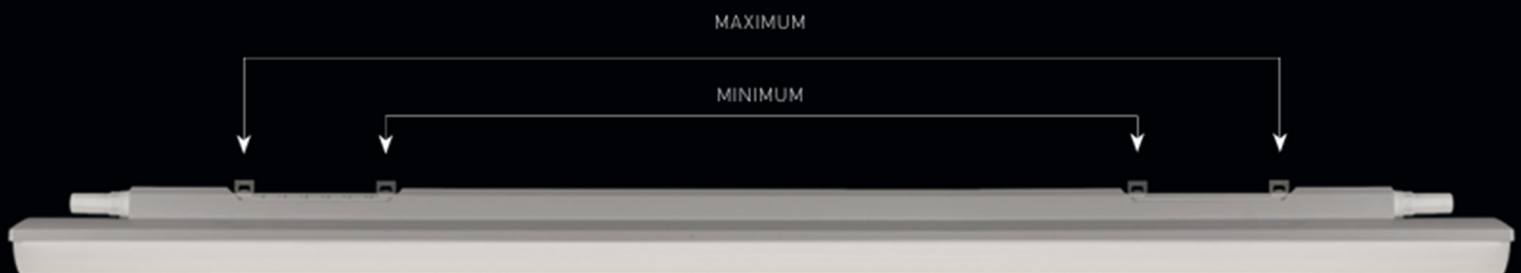
Type	Max, ambient temperature [°C]	Luminous flux of LED modules [lm]	Luminous flux of light fitting [lm]	Power consumption [W]	System efficacy [lm/W]	UGR Longitudinal/transverse	Net weight [kg]	A [mm]	D [mm]
Up to ambient temperature $t_a = 50^\circ\text{C}$ - body: dark grey ABS - diffuser: translucent ABS									
INNOVA 1.4ft ABS 2600/840	50	2600	2420	16,1	150	22.1 / 20.4	1,5	1170	420 - 700
INNOVA 1.4ft ABS 3200/840	50	3100	2880	19,1	151	22.7 / 21.0	1,5	1170	420 - 700
INNOVA 1.4ft ABS 4400/840	45	4300	4000	26,0	154	23.8 / 22.1	1,5	1170	420 - 700
INNOVA 1.4ft ABS 6400/840	45	6120	5690	36,1	158	25.0 / 23.4	1,5	1170	420 - 700
INNOVA 1.4ft ABS 8800/840	40	8690	8080	49,7	163	26.3 / 24.6	1,6	1170	420 - 700
INNOVA 1.5ft ABS 3250/840	50	3240	3010	19,5	154	22.1 / 20.4	1,8	1450	700 - 980
INNOVA 1.5ft ABS 4000/840	50	3850	3580	23,3	154	22.7 / 21.1	1,8	1450	700 - 980
INNOVA 1.5ft ABS 5500/840	45	5340	4970	31,9	156	23.8 / 22.2	1,8	1450	700 - 980
INNOVA 1.5ft ABS 8000/840	45	7780	7240	44,3	163	25.1 / 23.5	1,8	1450	700 - 980
INNOVA 1.5ft ABS 11000/840	40	12310	11450	71,1	161	26.7 / 25.1	1,9	1450	700 - 980

INNOVA ABS

Diffuser from translucent ABS

Type	1x3P	1x5P	DALI 1x5P	2x3P	2x5P	DALI 2x5P
INNOVA 1.4ft ABS 2600/840...	72411	72412	72413	72415	72416	72417
INNOVA 1.4ft ABS 3200/840...	72421	72422	72423	72425	72426	72427
INNOVA 1.4ft ABS 4400/840...	72431	72432	72433	72435	72436	72437
INNOVA 1.4ft ABS 6400/840...	72441	72442	72443	72445	72446	72447
INNOVA 1.4ft ABS 8800/840...	72401	72402	72403	72405	72406	72407
INNOVA 1.5ft ABS 3250/840...	72451	72452	72453	72455	72456	72457
INNOVA 1.5ft ABS 4000/840...	72461	72462	72463	72465	72466	72467
INNOVA 1.5ft ABS 5500/840...	72471	72472	72473	72475	72476	72477
INNOVA 1.5ft ABS 8000/840...	72481	72482	72483	72485	72486	72487
INNOVA 1.5ft ABS 11000/840...	72491	72492	72493	72495	72496	72497

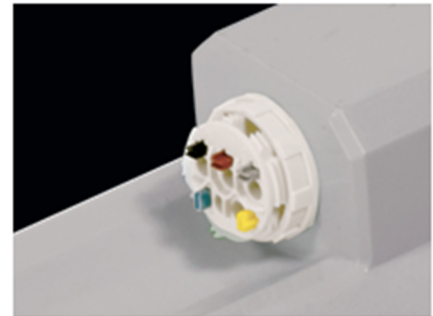
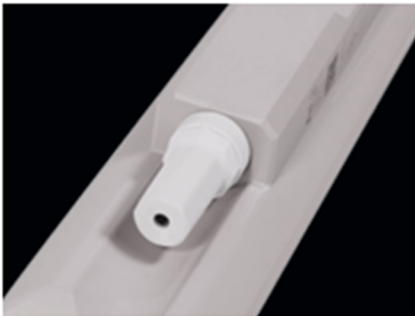
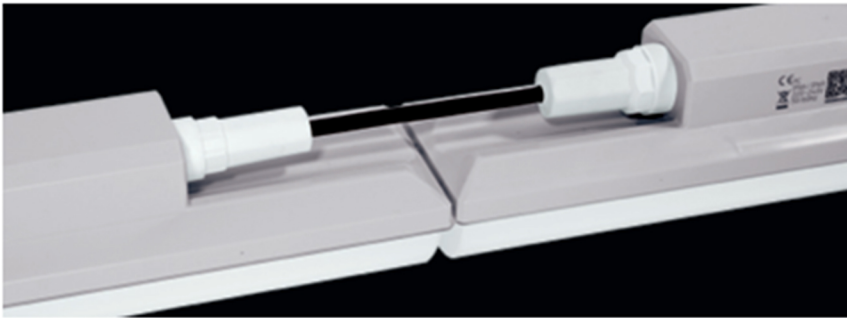
VARIABLE INSTALLATION PITCH



LIGHT FITTING INTERCONNECTION

An external terminal strip is used to ensure the supply cable can easily and quickly be connected with no need to open the light fixture (PLUG and PLAY system)

Interconnection of light fittings without spacing



MOUNTING

- A) Directly to a ceiling or a wall with the use of screws and stainless brackets
- B) Suspension with the use of stainless hooks
- C) Attachment with the use of side hangers to the wall - is not included in accessories

