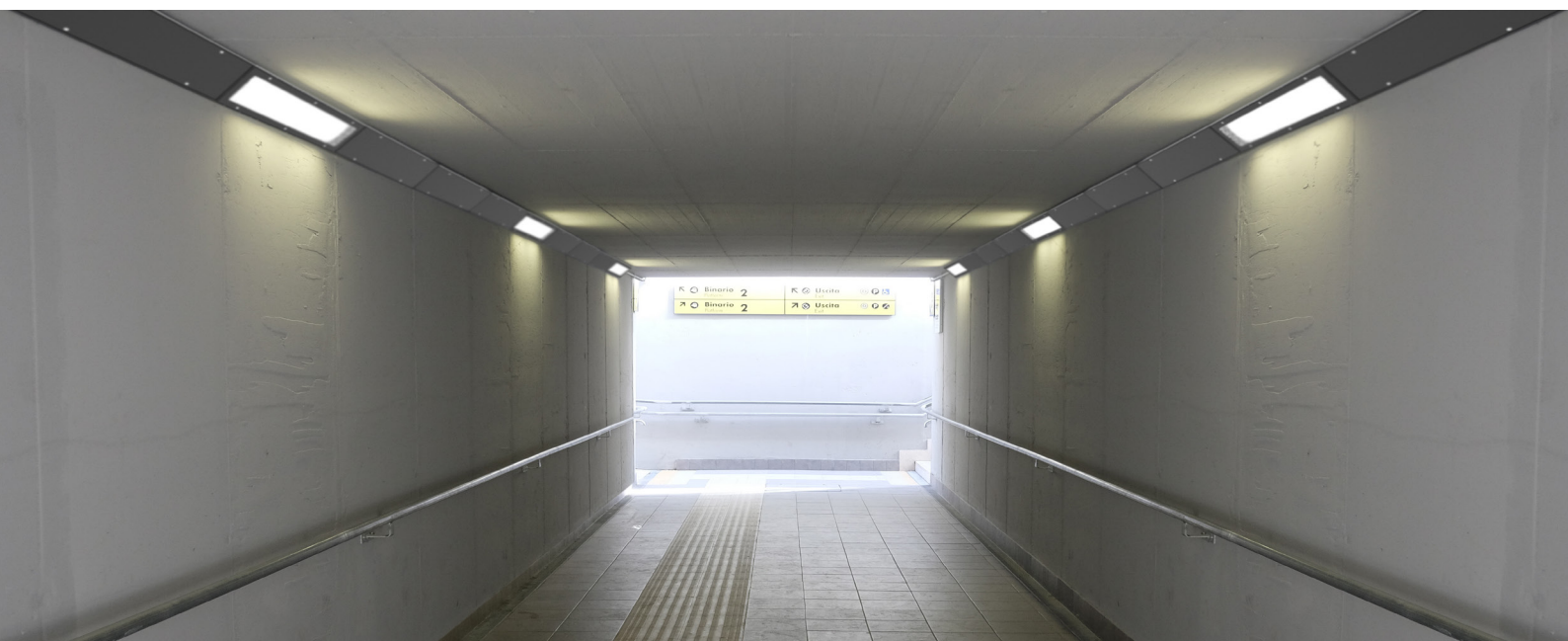
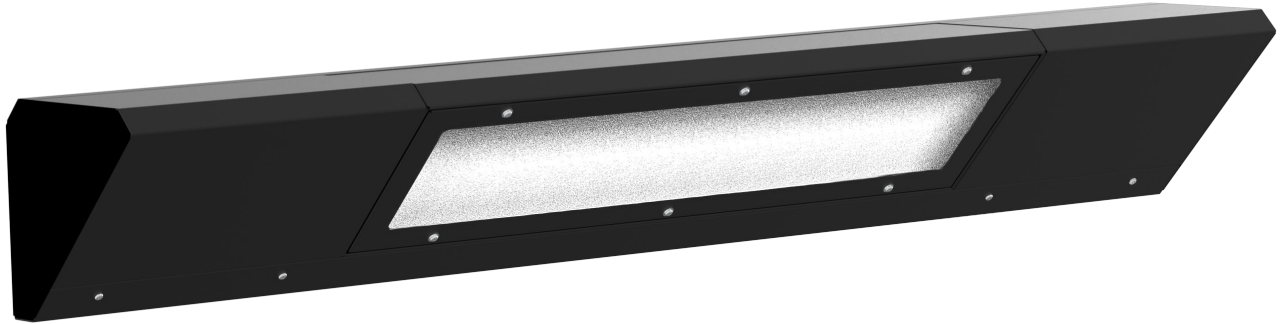


INV320LED-..-LN





CERTIFICATES: CE, POLISH RAILWAY CERTIFICATE, ENEC,
EN-60658-2-22 CERTIFICATE CNBOP no. 2910/2019

EXEMPLARY APPLICATIONS



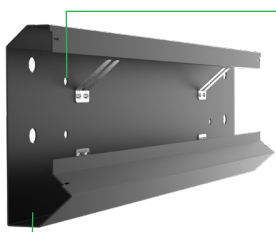
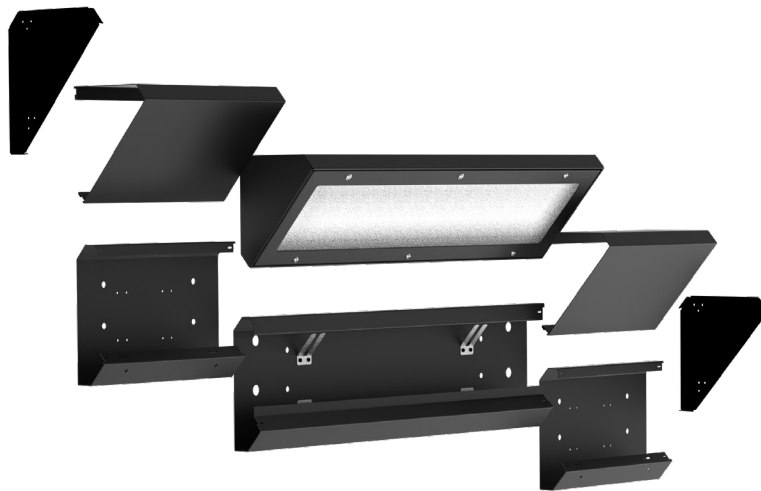
PLACES PRONE TO
ACTS OF VANDALISM



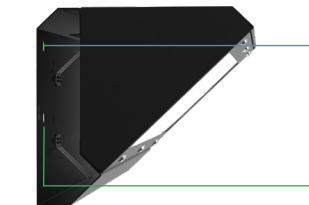
PASSAGEWAYS

LED modules light fixture characterised by very high shock resistance (IK11+). The housing is made of powder coated stainless steel. The shade is made of prismatic polycarbonate. The fixture has been designed to be mounted in the passageways in the space between the wall and the ceiling as a linear fixture. The fixture has a Polish National Railways certificate no. **D/IST/04/2019**

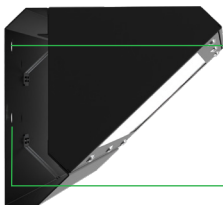
MOUNTING



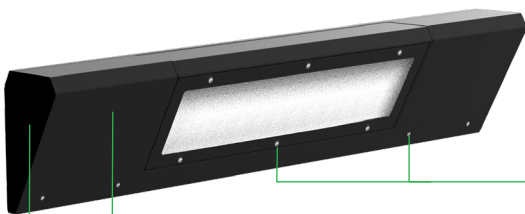
Mounting supporting bracket to the wall with expansion anchors



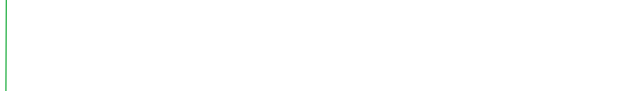
Cables routing



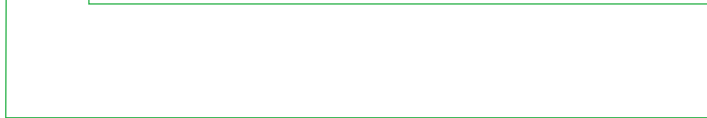
Mounting the fitting to the supporting bracket



Install frames with security screws

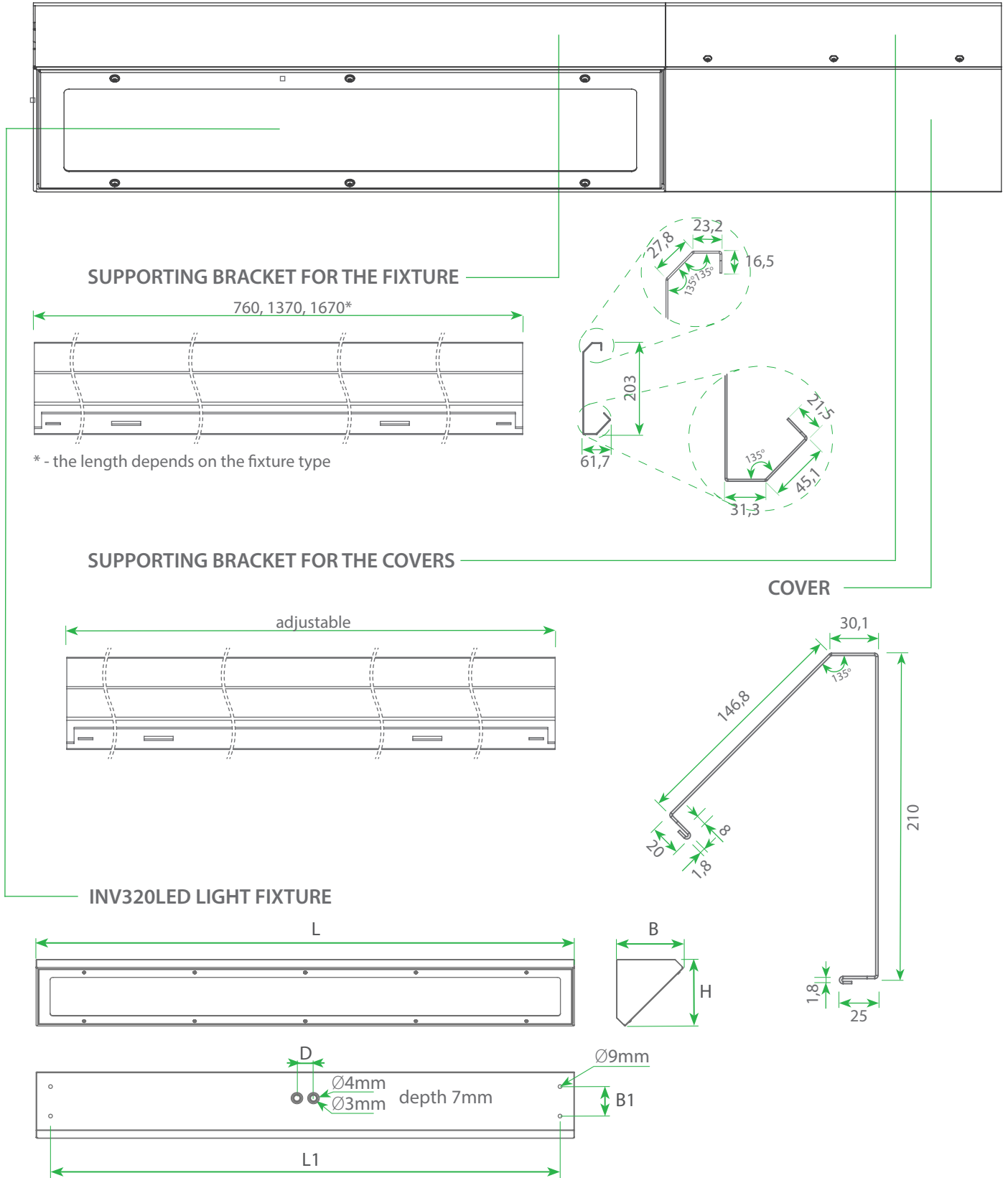


Install covers with security screws



Mounting the end-caps

DIMENSIONS



TYPE	L [mm]	L1 [mm]	B [mm]	H [mm]	D [mm]	B1 [mm]
INV320LED-0600	760	652	170	170	60	75
INV320LED-1200	1370	1290	170	170	60	75
INV320LED-1500	1670	1590	170	170	60	75

OPTIONAL VERSIONS



INV320LED-...-LNC (CONNECTOR)

Vandalproof corner connector with possibility to adjust shape and size to ensure the continuity of the LINE system. Connector is mounted directly to the housing of adjacent modules. Made of stainless steel. Entire LINE modular system is equipped with locks to prevent unauthorized access.



INV320LED-...-LNS (SENSORBOX)

Made of stainless steel, vandal-proof housing designed for placing cameras, speakers, sensors or other devices in it. It is also possible to mount sensors directly inside the light fixture. Housing is designed for corner mounting as one of the LINE system modules.

ADDITIONAL INFORMATION

Vandalproof line system is individually designed for the client's project. System is intended for installation in tunnels and underground passages. Thanks to a solid and compact construction, high resistance to mechanical damage was ensured. Special tools are required to disassemble system components, which prevents unauthorized access.

Maximum quantity of light fixtures connected in series for specific circuit breaker

Automatic circuit breaker type	C16	C20	B16	B20	B20
INV320LED-0600-J2	26	35	16	21	21
INV320LED-0600-B2	20	25	12	15	15
INV320LED-1200-J4	20	25	12	15	15
INV320LED-1200-B4	16	22	8	11	11
INV320LED-1500-J4M2	20	25	12	15	15

Maximum cross current - 16A

DOWNLOADS

