



**Hazardous**  
Lighting Solutions LTD



# PRIMELINE

*Dust-proof, UV-resistant, and highly water-resistant linear luminaire*



OFFSHORE



CHEMICAL  
WAREHOUSES



PASSAGEWAYS



CLEANROOM



CHEMICAL






REFINERIES



PHARMACEUTICAL



-  Ex symbol Ex II 2G Ex eb mb IIC T4 Gb
-  Ex symbol Ex II 2G Ex db eb mb IIC T4 Gb (for version with insulating switch disconnecter)
-  Ex II 2D Ex tb IIIC T70°C Db

## MECHANICAL FEATURES

**Housing:** Glass-fibre reinforced polyester (GRP)

**Diffuser Material:** UV-stabilised polycarbonate

**Diffuser in 3 versions:** clear/ opal / frosted

**Ingress protection:** IP66/IP67

**Gasket:** Silicon foam

**Impact Resistance:** HIGH according to EN IEC 60079-0

## ELECTRICAL FEATURES

**Connection terminals:** min 1,5mm<sup>2</sup>; max 4mm

**Input voltage:** AC 110-240, 50Hz DC 125-240, 0Hz or AC 220-240, 50Hz DC 220-240, 0Hz

**Power factor:** 23,4

**Protection class:** I

**IP:** IP66/67

**Ambient Temperature:** -40°C to +50°C (basic version) In emergency version with battery optional down to -20°C

## PHOTOMETRICAL PARAMETERS

**CRI:** standard: >80 option: >70 /90

**Colour temperature:** standard: 4000K / 4500 option: 5700K / 6500K



## **Integrated isolator switch – safety and simplified maintenance (central battery)**

PrimeLine luminaires in explosion-proof design can optionally be equipped with an integrated isolator switch that automatically disconnects the power supply when the diffuser is opened. This feature significantly improves operational safety and simplifies both maintenance and testing procedures, especially in demanding industrial environments.



## **Integrated isolator switch – safety and simplified maintenance (central battery)**

PrimeLine emergency luminaires are equipped with an integrated CB module, allowing for direct integration with modern central power supply and monitoring systems. This enables each luminaire to be individually monitored and controlled from a central unit, without the need for additional devices. PrimeLine luminaires are fully compatible with EATON central battery systems, making them easy to integrate into advanced emergency lighting monitoring and management systems.



## **Emergency luminaire with backup battery for sub-zero temperatures**

PrimeLine is one of the first emergency luminaires in the world that, in its battery-powered version, can operate reliably in ambient temperatures as low as  $-20^{\circ}\text{C}$ . Thanks to this innovation, PrimeLine significantly expands the scope of where emergency lighting can be safely and effectively used, setting a new standard for performance in demanding environments.



## **Durable and sealed to the core – built for extreme conditions**

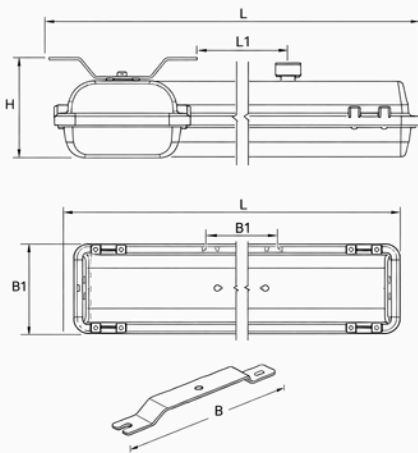
The PrimeLine luminaire is engineered for use in harsh and hazardous environments, offering reliable performance in areas exposed to dust, moisture, chemicals, or outdoor conditions. Its rugged construction and high ingress protection rating make it ideal for demanding industrial applications. The materials and sealing system ensure long-term resistance to external factors and mechanical stress.

## DIMENSIONS

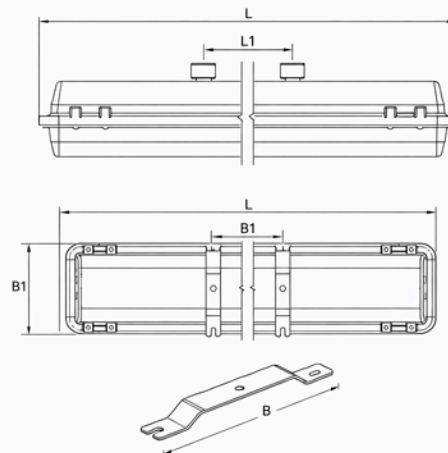
Mounting type	H	B1
Eyelet hanger R20	136	—
Pole mount bracket R50	156.2	—
Ceiling bracket D18	119	157
Ceiling bracket D40	143.7	200
Ceiling bracket C	153.4	—
Wall bracket K45	184.7	—

Fixture type	L	L1	B
PrimeLine 60- *****	670	400	173
PrimeLine 12- *****	1276	800	173

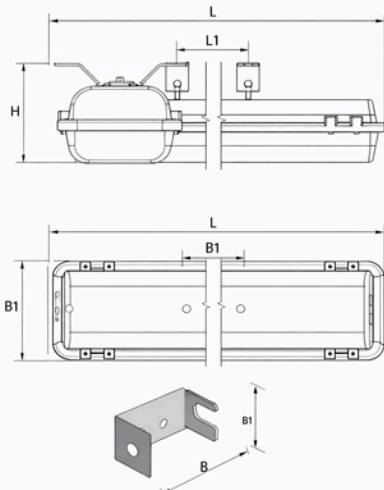
**Ceiling bracket D18 (code M1)**



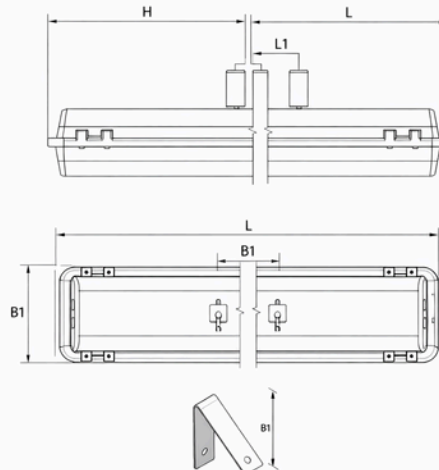
**Ceiling bracket D40 (code M2)**



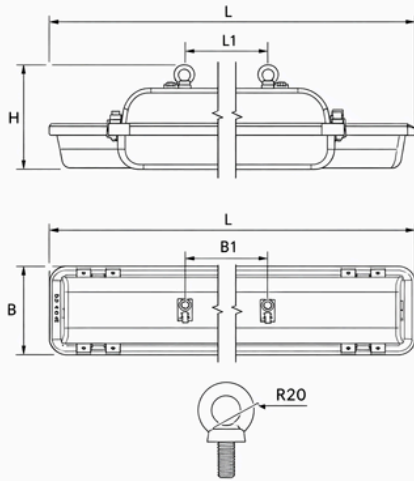
**Ceiling bracket C (code M4)**



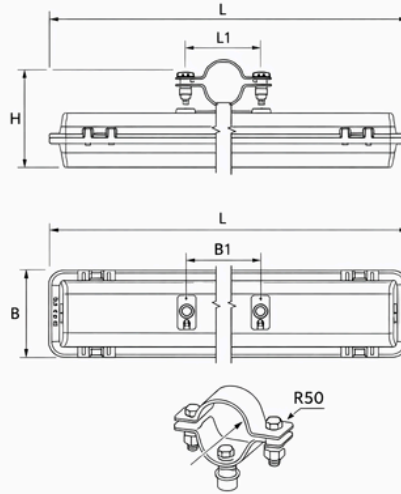
**Wall bracket K45 (code M3)**



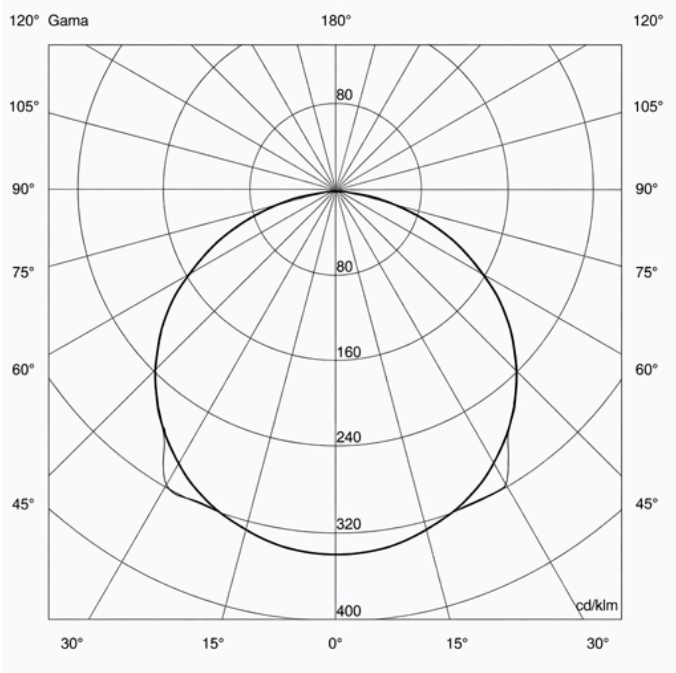
**Eyelet hanger R20 (code M5)**



**Pole mount bracket R50 (code M6)**



## PHOTOMETRY



## GENERAL LIGHTING FIXTURE

**LENGTH:** 670M | **ZONES:** 1, 2 AND 21, 22. | **LUMINOUS FLUX:** UP TO 4430LM

Specification	PrimeLine 60-1	PrimeLine 60-2	PrimeLine 60-3
Lighting source type	2 × LED module 10 W	2 × LED module 12 W	2 × LED module 14 W
Efficiency of the luminaire (lm/W)	126 / 134	128 / 136	129 / 137
Colour temperature [K]	**standard:** 4000K / 4500K **option:** 5700K / 6500K		
CRI	**standard:** >80 **option:** >70 / 90		

## RATED LUMINOUS FLUX [LM] FOR DIFFERENT DIFFUSERS – 4000K

Diffuser Type	60-1	60-2	60-3
Transparent	2948	3586	4179
Frosted	2748	3443	4012
Opal	2506	3048	3552

## RATED LUMINOUS FLUX [LM] FOR DIFFERENT DIFFUSERS – 4500K

Diffuser Type	60-1	60-2	60-3
Transparent	3125	3801	4430
Frosted	3000	3649	4253
Opal	2656	3231	3765

## GENERAL LIGHTING FIXTURE

**LENGTH:** 1267MM | **ZONES:** 1, 2 AND 21, 22. | **LUMINOUS FLUX:** UP TO 8798LM

Specification	PrimeLine 12-1	PrimeLine 12-2	PrimeLine 12-3
Lighting source type	4× LED module 10 W	4× LED module 12 W	4× LED module 14 W
Efficiency (lm/W)	135 / 143	135 / 143	134 / 142
Colour temperature	Standard: 4000K / 4500K; Option: 5700K / 6500K		
CRI	>80 (standard); >70 / 90 (option)		

## RATED LUMINOUS FLUX (4000K)

Diffuser	PrimeLine 12-1	PrimeLine 12-2	PrimeLine 12-3
Transparent	5800	7100	8300
Frosted	5568	6816	7968
Opal	4930	6035	7055

## RATED LUMINOUS FLUX (4500K)

Diffuser	PrimeLine 12-1	PrimeLine 12-2	PrimeLine 12-3
Transparent	6148	7526	8798
Frosted	5902	7225	8446
Opal	5226	6397	7478

## EMERGENCY LIGHT FITTING (CENTRAL BATTERY)

**LENGTH:** 670 MM | **ZONES:** 1, 2 AND 21, 22 | **LUMINOUS FLUX:** UP TO 4185 LM

Parameter	PrimeLine 60-1	PrimeLine 60-2	PrimeLine 60-3
Lighting source type	2× LED module 10 W	2× LED module 12 W	2× LED module 14 W
Efficiency of the luminaire [lm/W]	115 / 122	122 / 129	125 / 132
Colour temperature [K]	<b>standard:</b> 4000K   <b>option:</b> 4500K / 5700K / 6500K		
CRI	<b>standard:</b> >80   <b>option:</b> >70 / 90		

## RATED LUMINOUS FLUX [LM] FOR DIFFERENT TYPE OF DIFFUSER (COLOUR TEMPERATURE: 4000K):

Diffuser	PrimeLine 60-1	PrimeLine 60-2	PrimeLine 60-3
Transparent	2946	3613	4185
Frosted	2776	3405	3944
Opal	2375	2913	3374



## EMERGENCY LIGHT FITTING (CENTRAL BATTERY)

**LENGTH:** 1276 MM | **ZONES:** 1, 2 AND 21, 22 | **LUMINOUS FLUX:** UP TO 8305 LM

Parameter	PrimeLine 12-1	PrimeLine 12-2	PrimeLine 12-3
Lighting source type	4× LED module 10 W	4× LED module 12 W	4× LED module 14 W
Efficiency of the luminaire [lm/W]	131 / 139	131 / 139	131 / 139
Colour temperature [K]	standard: 4000K   option: 4500K, 5700K / 6500K		
CRI	standard: >80   option: >70 / 90		

## RATED LUMINOUS FLUX [LM] FOR DIFFERENT TYPE OF DIFFUSER (COLOUR TEMPERATURE: 4000K):

Diffuser	PrimeLine 12-1	PrimeLine 12-2	PrimeLine 12-3
Transparent	5979	7293	8305
Frosted	5635	6873	7827
Opal	4820	5880	6696

## EMERGENCY LIGHT FITTING (BATTERY BACKUP)

**LENGTH:** 670 MM | **ZONES:** 1, 2 AND 21, 22 | **LUMINOUS FLUX:** UP TO 3520 LM

Parameter	PrimeLine 60-1	PrimeLine 60-2	PrimeLine 60-2
Emergency mode duration	1h at $-20 \leq T_a \leq 0^\circ\text{C}$ 1.5h at $0 \leq T_a \leq +40^\circ\text{C}$	1.5h	3h
Lighting source type	2× LED module 10 W	2× LED module 12 W	2× LED module 12 W
Luminous flux in emergency mode [lm]	840–1050	440–550 280–350 (-20 up to +40)	360–450
Colour temperature [K]	<b>standard:</b> 4000K   <b>option:</b> 4500K / 5700K / 6500K		
CRI	<b>standard:</b> >80   <b>option:</b> >70 / 90		
Efficiency of the luminaire [lm/W]	107 / 114	113 / 120	113 / 120

## RATED LUMINOUS FLUX [LM] FOR DIFFERENT TYPE OF DIFFUSER (COLOUR TEMPERATURE: 4000K):

Diffuser	PrimeLine 60-1	PrimeLine 60-2 (1h)	PrimeLine 60-2 (3h)
Transparent	2930	3520	3520
Frosted	2761	3317	3317
Opal	2362	2838	2838