

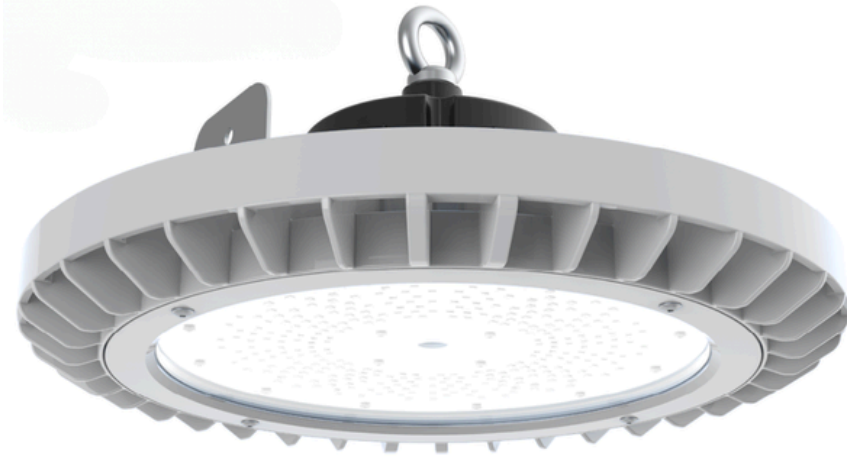


**Hazardous**  
Lighting Solutions LTD



# TAUREX 1 G2

High bay lighting specific for  
explosive environments.



AVIATION



OIL & GAS



II 2G Ex db eb ib mb op is IIC T5 Gb  
II 2D Ex tb op is IIC T95°C Db

## MECHANICAL FEATURES

**Material:** copper free casing aluminium alloy  
with surface protected against impacts and  
corrosive environments

**Diffuser:** hardened glass

**Eyebolt:** stainless steel

**Ingress Protection:** IP66/67

**Impact Resistance:** IK10

## ELECTRICAL FEATURES

**Connection:** 3- pole screwless connector

**Power Factor:** > 0.97 full load

**Class Protection:** I

**Rated Voltage:** 198-277VAC / 198-250VDC

**THD:** > 20% full load

**Inrush Current:** 75A full load

## WORK PARAMETERS

**Ambient Temperature:** +60°C to -32°C

**Lifetime:** L80 90,000 at 25°C

## DESCRIPTION

FAMILY	DIAMETER (mm)	LUMINOUS FLUX (lm)	CRI	LIGHT COLOUR (K)	EXTERNAL CONNECTION	TEMPERATURE RANGE
> TAUREX 1 G2	> 38: Ø380	> 64: 6400 > 96: 9600 > 128: 12800 > 160: 16000 > 192: 19200 > 224: 22400 > 240: 24000 > 256: 25600	> 8: >80	> 40: 4000K	> CG: polyamide cable gland > NiCG: nickel-plated cable gland	> HT: high temperature version up to 75°C with an additional heat sink

## OPERATIONAL DATA

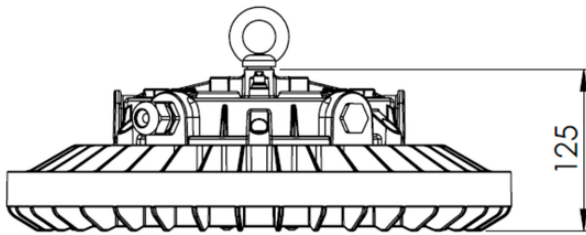
Description	Luminous flux (lm)	Power (W)	Efficiency (lm/W)	Colour temperature (K)	CRI	Temperature range
TAUREX G2 38 64-840 CG	6400	40	160	4000	80	-32°C – +60°C
TAUREX G2 38 96-840 CG	9600	60	160	4000	80	-32°C – +60°C
TAUREX G2 38 128-840 CG	12800	80	160	4000	80	-32°C – +60°C
TAUREX G2 38 160-840 CG	16000	100	160	4000	80	-32°C – +55°C
TAUREX G2 38 192-840 CG	19200	120	160	4000	80	-32°C – +55°C
TAUREX G2 38 224-840 CG	22400	140	160	4000	80	-32°C – +50°C
TAUREX G2 38 240-840 CG	24000	150	160	4000	80	-32°C – +50°C
TAUREX G2 38 256-840 CG	25600	160	160	4000	80	-32°C – +50°C

## HIGH TEMPERATURE

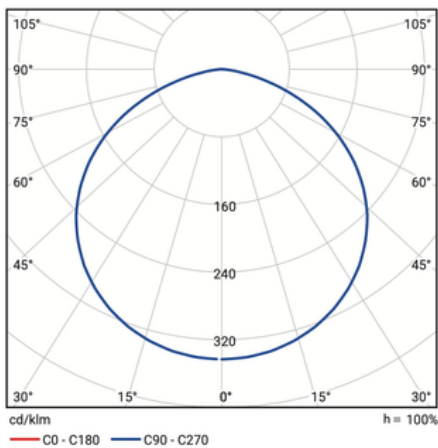
Description	Luminous flux (lm)	Power (W)	Efficiency (lm/W)	Colour temperature (K)	CRI	Temperature range
TAUREX G2 38 64-840 NiCG HT	6400	40	160	4000	80	-32°C – +75°C
TAUREX G2 38 96-840 NiCG HT	9600	60	160	4000	80	-32°C – +70°C
TAUREX G2 38 128-840 NiCG HT	12800	80	160	4000	80	-32°C – +65°C

## DIMENSIONS

Description	Ø (mm)	Y (mm)	L x W x H (mm)	Item (kg)	Pcs / Box	Box (kg)	Groupage (pcs / Euro pallet)	FTL / container (pcs / double pallet)
TAUREX1 G2...	380	125	390 x 390 x 200	6.5	1	7.5	48	48

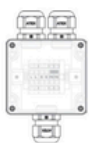


## PHOTOMETRY



## ACCESSORIES

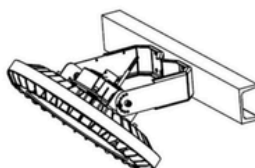
- 25784301 – Bracket for tube mounting for Taurex G2
- 35784301 – Bracket for surface mounting for Taurex G2
- 52403201 – ATEX junction box 80x75x75mm
- 04352201 – ATEX junction box 122x120x90mm
- 47667301 – Nickel brass Ex cable gland, M25, with nut and ring, 1 unit
- 57667301 – Nickel brass Ex cable gland, M20, with nut and ring, 1 unit



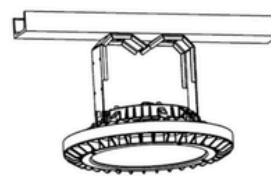
52403201 / 04352201



47667301 / 57667301



Wall mounting



Celling mounting



Tube mounting